

CTHRC1 Antibody

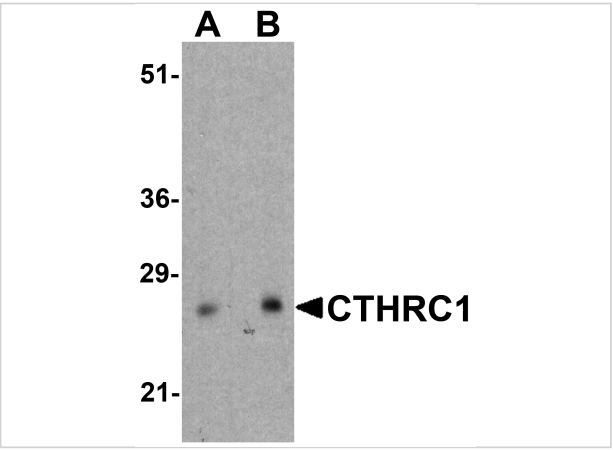
CATALOG NUMBER: 8101

Specifications

Host Species	Rabbit
Species Reactivity	Human, Mouse, Rat
Immunogen	CTHRC1 antibody was raised against a 19 amino acid peptide near the amino terminus of human CTHRC1. The immunogen is located within the first 50 amino acids of CTHRC1.
Conjugate	Unconjugated
Tested Applications	ELISA, IF, IHC-P, WB
User Note	Optimal dilutions for each application to be determined by the researcher.
Specificity	CTHRC1 antibody is human, mouse and rat reactive. At least two isoforms of CTHRC1 are known to exist; this antibody will detect only the larger isoform.
Predicted Molecular Weight	Predicted: 27 kDa Observed: 27 kDa

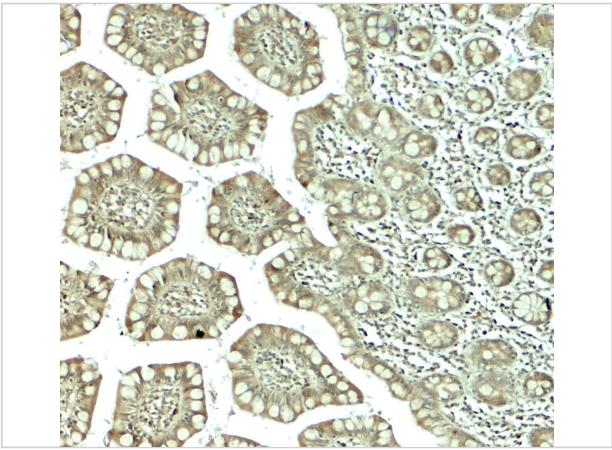
Properties

Purification	CTHRC1 antibody is affinity chromatography purified via peptide column.
Clonality	Polyclonal
Isotype	IgG
Physical State	Liquid
Buffer	CTHRC1 antibody is supplied in PBS containing 0.02% sodium azide.
Concentration	1 mg/mL
Storage Conditions	CTHRC1 antibody can be stored at 4°C for three months and -20°C, stable for up to one year.



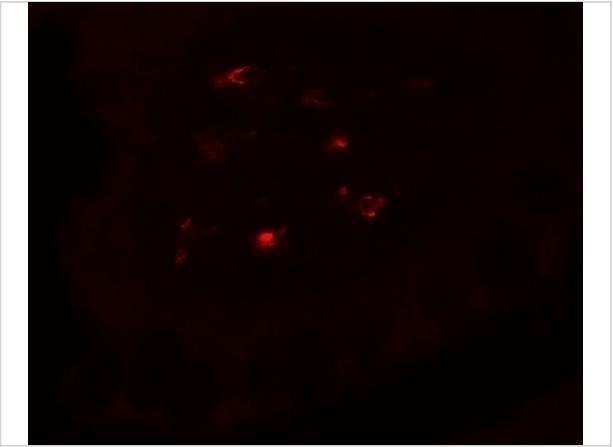
CTHRC1 Antibody 1

Western blot analysis of CTHRC1 in rat small intestine tissue lysate with CTHRC1 antibody at (A) 1 and (B) 2 µg/mL.



CTHRC1 Antibody 2

Immunohistochemistry of CTHRC1 in human small intestine tissue with CTHRC1 antibody at 5 µg/mL.



CTHRC1 Antibody 3

Immunofluorescence of CTHRC1 in human small intestine tissue with CTHRC1 antibody at 20 µg/mL.

Disclaimer

Disclaimer	Optimal dilutions/concentrations should be determined by the end user. The information provided is a guideline for product use. This product is for research use only.
------------	--

For research use only. For additional information, visit ProSci's [Terms and Conditions Page](#).