

FOXG1 Antibody

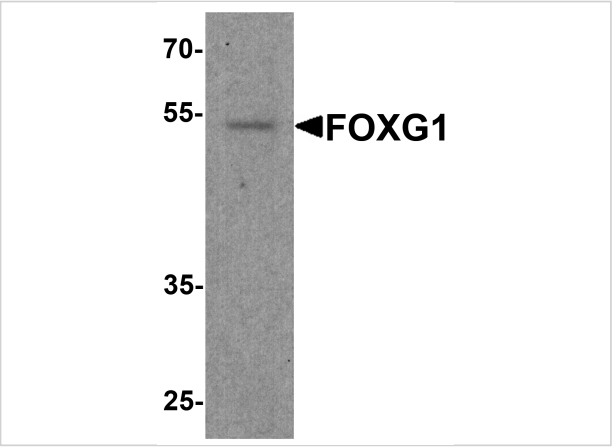
CATALOG NUMBER: 8089

Specifications

Host Species	Rabbit
Species Reactivity	Human, Mouse, Rat
Homology	Predicted species reactivity based on immunogen sequence: Chicken: (100%)
Immunogen	FOXG1 antibody was raised against an 18 amino acid peptide near the center of human FOXG1. The immunogen is located within amino acids 160 - 210 of FOXG1.
Conjugate	Unconjugated
Tested Applications	ELISA, IF, WB
User Note	Optimal dilutions for each application to be determined by the researcher.
Specificity	FOXG1 antibody is human, mouse and rat reactive.
Predicted Molecular Weight	Predicted: 54 kDa Observed: 54 kDa

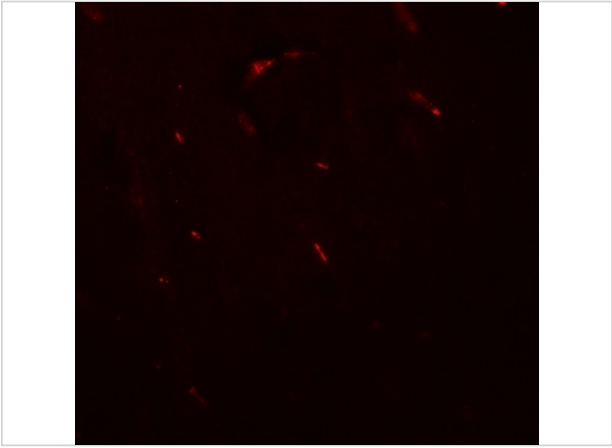
Properties

Purification	FOXG1 antibody is affinity chromatography purified via peptide column.
Clonality	Polyclonal
Isotype	IgG
Physical State	Liquid
Buffer	FOXG1 antibody is supplied in PBS containing 0.02% sodium azide.
Concentration	1 mg/mL
Storage Conditions	FOXG1 antibody can be stored at 4°C, stable for up to one year.



FOXG1 Antibody 1

Western blot analysis of FOXG1 in rat brain tissue lysate with FOXG1 antibody at 1 µg/ml.



FOXG1 Antibody 2

Immunofluorescence of FOXG1 in mouse brain tissue with FOXG1 antibody at 20 µg/ml.

Disclaimer

Disclaimer	Optimal dilutions/concentrations should be determined by the end user. The information provided is a guideline for product use. This product is for research use only.
------------	--

For research use only. For additional information, visit ProSci's [Terms and Conditions Page](#).