

## MYH8 Antibody

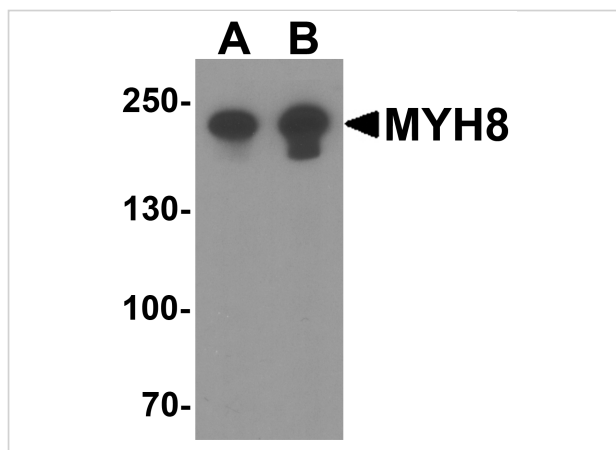
CATALOG NUMBER: 8081

### Specifications

Host Species	Rabbit
Species Reactivity	Human, Mouse, Rat
Homology	Predicted species reactivity based on immunogen sequence: Horse: (95%), Rabbit: (95%), Pig: (89%), Bovine: (89%), Chicken: (89%)
Immunogen	MYH8 antibody was raised against a 19 amino acid peptide near the amino terminus of human MYH8. The immunogen is located within amino acids 60 - 110 of MYH8.
Conjugate	Unconjugated
Tested Applications	ELISA, IF, IHC-P, WB
User Note	Optimal dilutions for each application to be determined by the researcher.
Specificity	MYH8 antibody is human, mouse and rat reactive. MYH8 antibody is predicted to not cross-react with other members of the myosin heavy chain family.
Predicted Molecular Weight	Predicted: 213 kDa Observed: 220 kDa

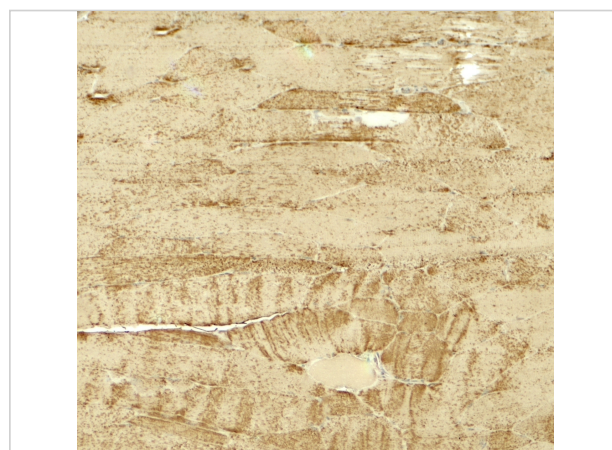
### Properties

Purification	MYH8 antibody is affinity chromatography purified via peptide column.
Clonality	Polyclonal
Isotype	IgG
Physical State	Liquid
Buffer	MYH8 antibody is supplied in PBS containing 0.02% sodium azide.
Concentration	1 mg/mL
Storage Conditions	MYH8 antibody can be stored at 4°C for three months and -20°C, stable for up to one year.



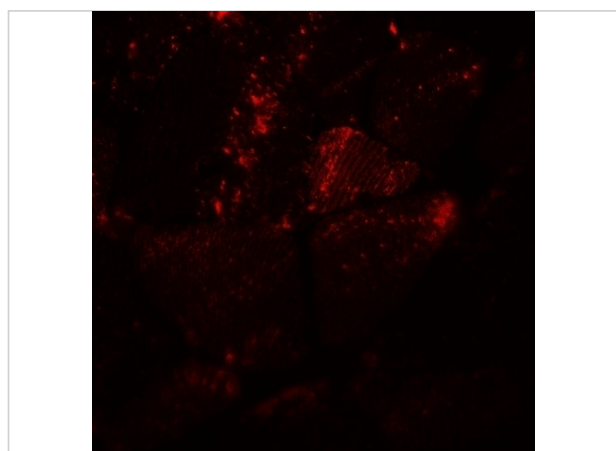
### MYH8 Antibody 1

Western blot analysis of MYH8 in HeLa cell lysate with MYH8 antibody at (A) 0.5 and (B) 1  $\mu$ g/ml.



### MYH8 Antibody 2

Immunohistochemistry of MYH8 in mouse skeletal muscle tissue with MYH8 antibody at 5  $\mu$ g/ml.



### MYH8 Antibody 3

Immunofluorescence of MYH8 in mouse skeletal muscle tissue with MYH8 antibody at 20  $\mu$ g/ml.

## Disclaimer

#### Disclaimer

Optimal dilutions/concentrations should be determined by the end user. The information provided is a guideline for product use. This product is for research use only.

For research use only. For additional information, visit ProSci's [Terms and Conditions Page](#).