

Apaf1 Antibody

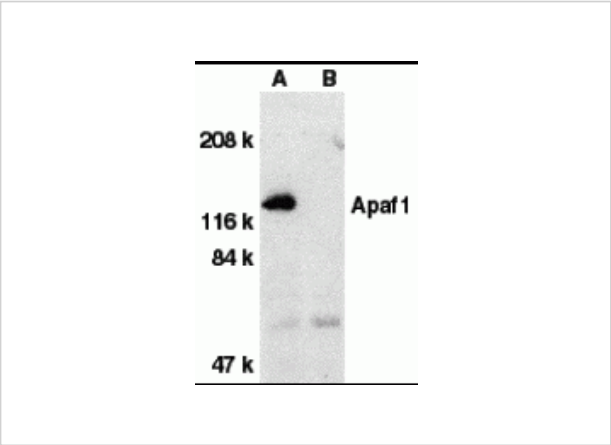
CATALOG NUMBER: 2015

Specifications

Host Species	Rabbit
Species Reactivity	Human, Mouse, Rat
Immunogen	Apaf1 antibody was raised against a peptide corresponding to amino acids near the carboxy terminus of human Apaf1. The sequence of the immunogenic peptide differs from that of murine Apaf1 by one amino acid. The immunogen is located within the last 50 amino acids of Apaf1.
Conjugate	Unconjugated
Tested Applications	ELISA, IHC-P, WB
User Note	Optimal dilutions for each application to be determined by the researcher.
Predicted Molecular Weight	130 kDa

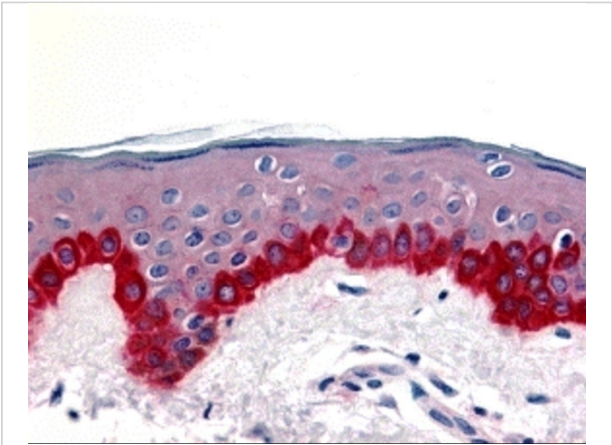
Properties

Purification	Apaf1 Antibody is affinity chromatography purified via peptide column.
Clonality	Polyclonal
Isotype	IgG
Physical State	Liquid
Buffer	Apaf1 Antibody is supplied in PBS containing 0.02% sodium azide.
Concentration	1 mg/ml
Storage Conditions	Apaf1 antibody can be stored at 4°C for three months and -20°C, stable for up to one year. As with all antibodies care should be taken to avoid repeated freeze thaw cycles. Antibodies should not be exposed to prolonged high temperatures.



Apaf1 Antibody 1

Western blot analysis of Apaf1 in human heart tissue lysate with Apaf1 antibody at 1 µg/mL dilution in the absence (A) or presence (B) of blocking peptide.



Apaf1 Antibody 2

Immunohistochemistry of Apaf1 in human skin tissue with Apaf1 antibody at 20 µg/mL.

Disclaimer

Disclaimer	Optimal dilutions/concentrations should be determined by the end user. The information provided is a guideline for product use. This product is for research use only.
------------	--

For research use only. For additional information, visit ProSci's [Terms and Conditions Page](#).