

P2RX7 Antibody

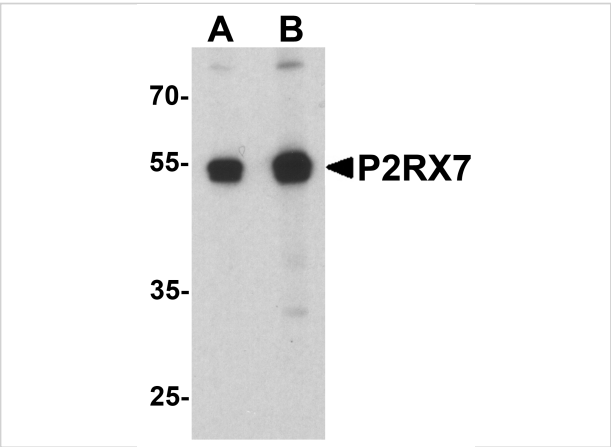
CATALOG NUMBER: 8015

Specifications

Host Species	Rabbit
Species Reactivity	Human, Mouse
Homology	Predicted species reactivity based on immunogen sequence: Rat: (81%)
Immunogen	P2RX7 antibody was raised against a 17 amino acid peptide near the carboxy terminus of human P2RX7. The immunogen is located within the last 50 amino acids of P2RX7.
Conjugate	Unconjugated
Tested Applications	ELISA, ICC, IF, WB
User Note	Optimal dilutions for each application to be determined by the researcher.
Specificity	P2RX7 antibody is human, mouse, and rat reactive. Multiple isoforms of P2RX7 are known to exist.
Predicted Molecular Weight	Predicted: 34, 47, 65 kDa Observed: 54 kDa

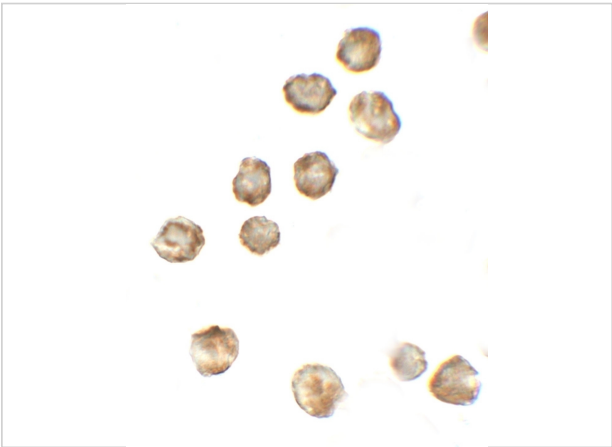
Properties

Purification	P2RX7 antibody is affinity chromatography purified via peptide column.
Clonality	Polyclonal
Isotype	IgG
Physical State	Liquid
Buffer	P2RX7 antibody is supplied in PBS containing 0.02% sodium azide.
Concentration	1 mg/mL
Storage Conditions	P2RX7 antibody can be stored at 4°C for three months and -20°C, stable for up to one year.



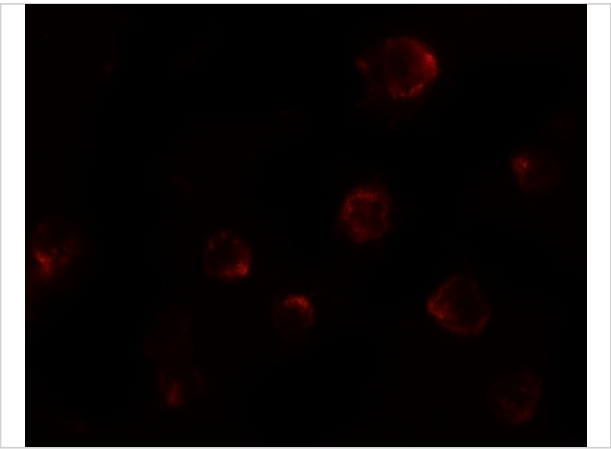
P2RX7 Antibody 1

Western blot analysis of P2RX7 in 3T3 cell lysate with P2RX7 antibody at (A) 1 and (B) 2 μ g/ml.



P2RX7 Antibody 2

Immunocytochemistry of P2RX7 in 3T3 cells with P2RX7 antibody at 5 μ g/mL.



P2RX7 Antibody 3

Immunofluorescence of P2RX7 in 3T3 cells with P2RX7 antibody at 20 μ g/mL.

Disclaimer

Disclaimer	Optimal dilutions/concentrations should be determined by the end user. The information provided is a guideline for product use. This product is for research use only.
-------------------	--

For research use only. For additional information, visit ProSci's [Terms and Conditions Page](#).