

PDCL3 Antibody

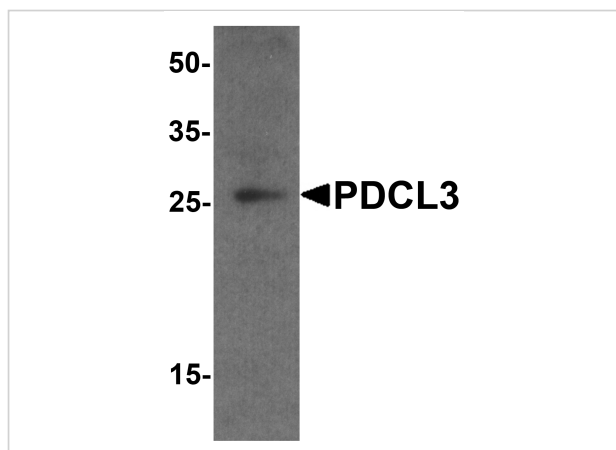
CATALOG NUMBER: 7889

Specifications

Host Species	Rabbit
Species Reactivity	Human, Mouse, Rat
Immunogen	PDCL3 antibody was raised against a 14 amino acid peptide near the carboxy terminus of human PDCL3. The immunogen is located within the last 50 amino acids of PDCL3.
Conjugate	Unconjugated
Tested Applications	ELISA, IF, IHC-P, WB
User Note	Optimal dilutions for each application to be determined by the researcher.
Specificity	PDCL3 antibody is human, mouse and rat reactive. PDCL3 antibody is predicted to not cross-react with other members of the PDCL protein family.
Predicted Molecular Weight	Predicted: 26 kDa Observed: 25 kDa

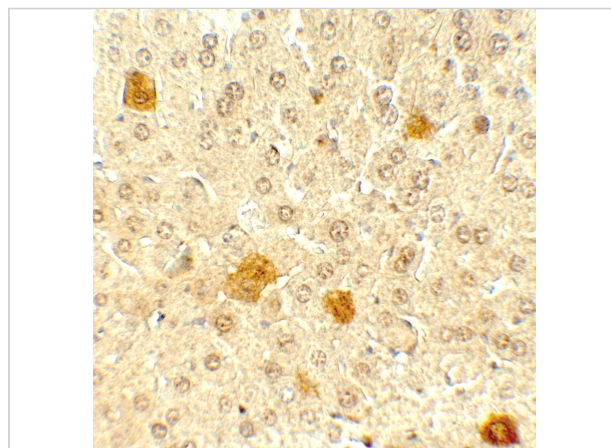
Properties

Purification	PDCL3 antibody is affinity chromatography purified via peptide column.
Clonality	Polyclonal
Isotype	IgG
Physical State	Liquid
Buffer	PDCL3 antibody is supplied in PBS containing 0.02% sodium azide.
Concentration	1 mg/mL
Storage Conditions	PDCL3 antibody can be stored at 4°C for three months and -20°C, stable for up to one year.



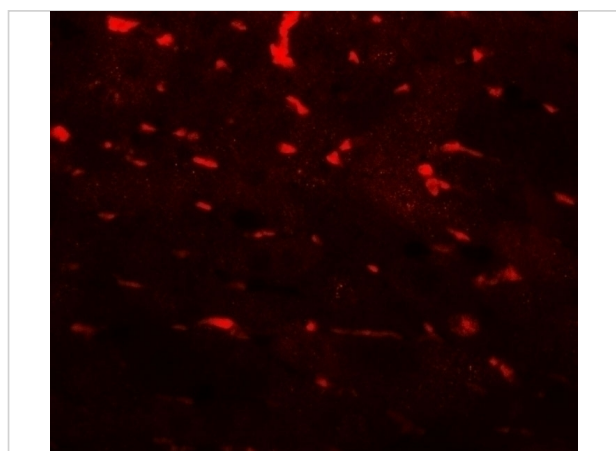
PDCL3 Antibody 1

Western blot analysis of PDCL3 in human brain tissue lysate with PDCL3 antibody at 1 µg/ml.



PDCL3 Antibody 2

Immunohistochemistry of PDCL3 in mouse liver tissue with PDCL3 antibody at 5 µg/mL.



PDCL3 Antibody 3

Immunofluorescence of PDCL3 in mouse liver tissue with PDCL3 antibody at 20 µg/mL.

Disclaimer

Disclaimer

Optimal dilutions/concentrations should be determined by the end user. The information provided is a guideline for product use. This product is for research use only.

For research use only. For additional information, visit ProSci's [Terms and Conditions Page](#).