

PDCL Antibody

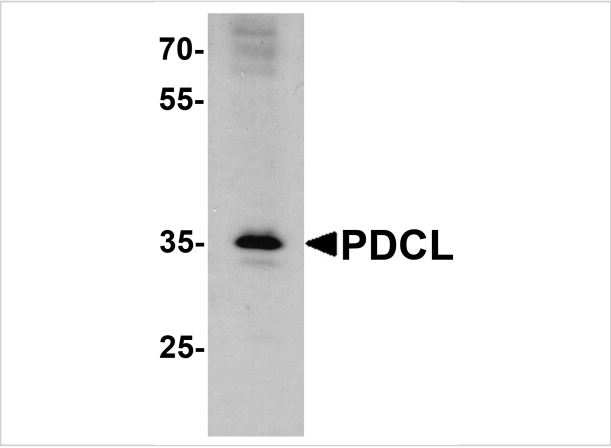
CATALOG NUMBER: 7871

Specifications

Host Species	Rabbit
Species Reactivity	Human, Mouse, Rat
Homology	Predicted species reactivity based on immunogen sequence: Bovine: (94%)
Immunogen	PDCL antibody was raised against a 16 amino acid peptide near the amino terminus of human PDCL. The immunogen is located within the first 50 amino acids of PDCL.
Conjugate	Unconjugated
Tested Applications	ELISA, WB
User Note	Optimal dilutions for each application to be determined by the researcher.
Specificity	PDCL antibody is human, mouse and rat reactive. At least two isoforms of PDCL are known to exist. PDCL antibody is predicted to not cross-react with other members of the PDCL protein family.
Predicted Molecular Weight	Predicted: 33 kDa Observed: 35 kDa

Properties

Purification	PDCL antibody is affinity chromatography purified via peptide column.
Clonality	Polyclonal
Isotype	IgG
Physical State	Liquid
Buffer	PDCL antibody is supplied in PBS containing 0.02% sodium azide.
Concentration	1 mg/mL
Storage Conditions	PDCL antibody can be stored at 4°C for three months and -20°C, stable for up to one year.



PDCL Antibody 1

Western blot analysis of PDCL in K562 cell lysate with PDCL antibody at 1 µg/ml.

Disclaimer

Disclaimer	Optimal dilutions/concentrations should be determined by the end user. The information provided is a guideline for product use. This product is for research use only.
------------	--

For research use only. For additional information, visit ProSci's [Terms and Conditions Page](#).