

ME2 Antibody

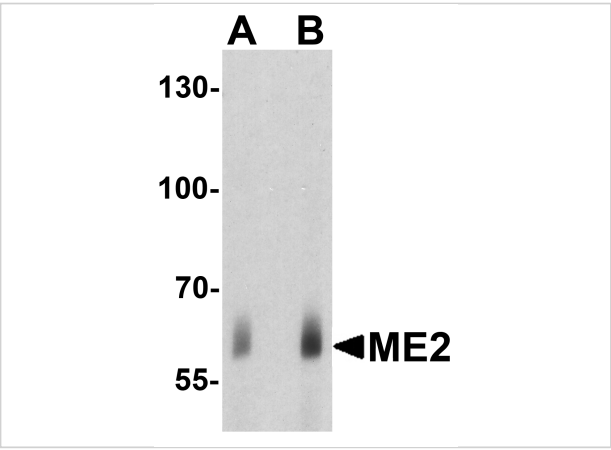
CATALOG NUMBER: 7723

Specifications

Host Species	Rabbit
Species Reactivity	Human
Immunogen	ME2 antibody was raised against a 17 amino acid peptide near the center of human ME2. The immunogen is located within amino acids 340 - 390 of ME2.
Conjugate	Unconjugated
Tested Applications	ELISA, IF, IHC-P, WB
User Note	Optimal dilutions for each application to be determined by the researcher.
Specificity	ME2 antibody is human specific. At least two isoforms of ME2 are known to exist; this antibody will detect both isoforms. ME2 antibody is predicted not to cross-react with ME1.
Predicted Molecular Weight	Predicted: 64 kDa Observed: 60 kDa

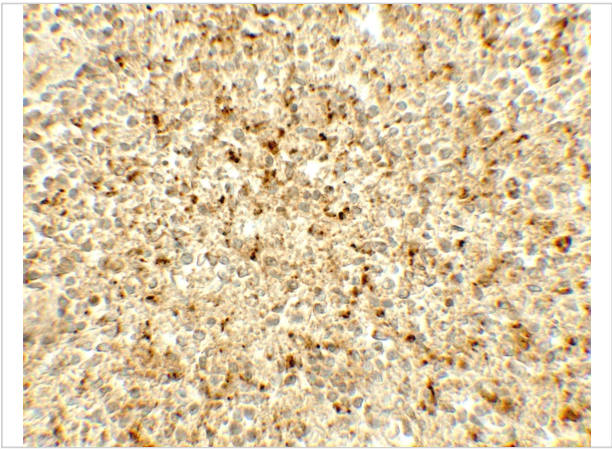
Properties

Purification	ME2 antibody is affinity chromatography purified via peptide column.
Clonality	Polyclonal
Isotype	IgG
Physical State	Liquid
Buffer	ME2 Antibody is supplied in PBS containing 0.02% sodium azide.
Concentration	1 mg/mL
Storage Conditions	ME2 antibody can be stored at 4°C for three months and -20°C, stable for up to one year.



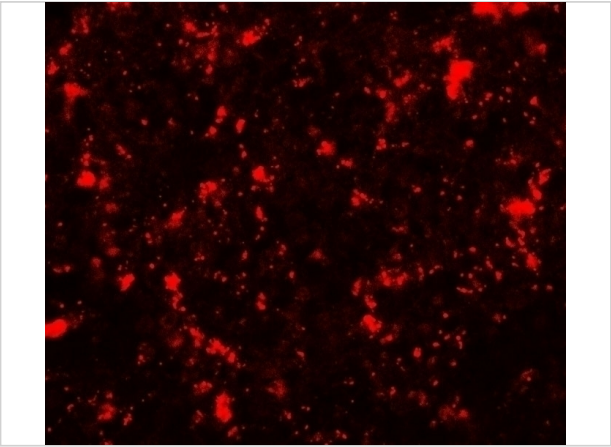
ME2 Antibody 1

Western blot analysis of ME2 in human spleen tissue lysate with ME2 antibody at (A) 1 and (B) 2µg/ml.



ME2 Antibody 2

Immunohistochemistry of ME2 in human spleen tissue with ME2 antibody at 5 µg/mL.



ME2 Antibody 3

Immunofluorescence of ME2 in human spleen tissue with ME2 antibody at 20 µg/mL.

Disclaimer

Disclaimer	Optimal dilutions/concentrations should be determined by the end user. The information provided is a guideline for product use. This product is for research use only.
------------	--

For research use only. For additional information, visit ProSci's [Terms and Conditions Page](#).