

## ME1 Antibody

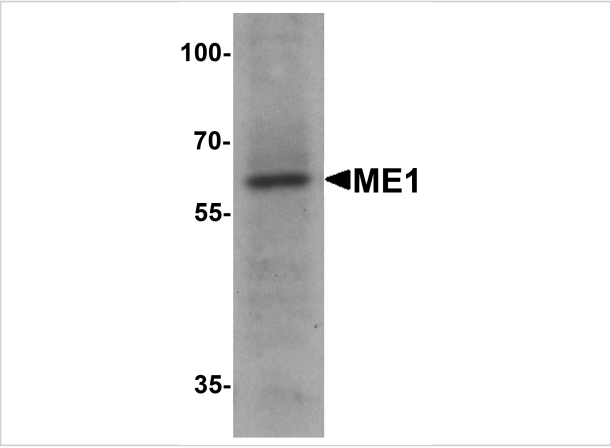
CATALOG NUMBER: 7721

### Specifications

Host Species	Rabbit
Species Reactivity	Human, Mouse, Rat
Immunogen	ME1 antibody was raised against a 16 amino acid peptide near the amino terminus of human ME1. The immunogen is located within the first 50 amino acids of ME1.
Conjugate	Unconjugated
Tested Applications	ELISA, IHC-P, WB
User Note	Optimal dilutions for each application to be determined by the researcher.
Specificity	ME1 antibody is human, mouse and rat reactive. ME1 antibody is predicted not to cross-react with ME2.
Predicted Molecular Weight	Predicted: 63 kDa Observed: 63 kDa

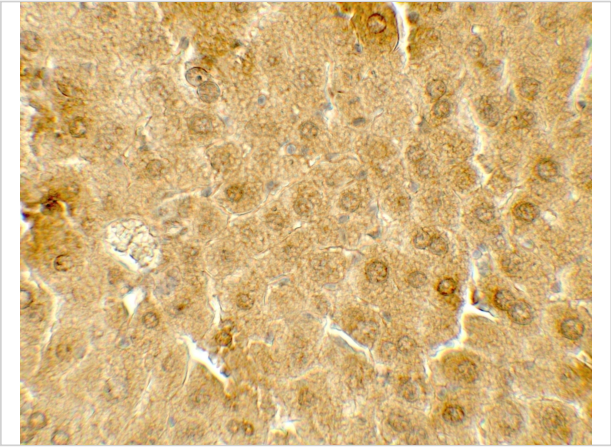
### Properties

Purification	ME1 antibody is affinity chromatography purified via peptide column.
Clonality	Polyclonal
Isotype	IgG
Physical State	Liquid
Buffer	ME1 Antibody is supplied in PBS containing 0.02% sodium azide.
Concentration	1 mg/mL
Storage Conditions	ME1 antibody can be stored at 4°C for three months and -20°C, stable for up to one year.



ME1 Antibody 1

Western blot analysis of ME1 in 293 cell lysate with ME1 antibody at 1 µg/ml.



ME1 Antibody 2

Immunohistochemistry of ME1 in mouse liver tissue with ME1 antibody at 5 µg/mL.

Disclaimer

Disclaimer	Optimal dilutions/concentrations should be determined by the end user. The information provided is a guideline for product use. This product is for research use only.
------------	--

For research use only. For additional information, visit ProSci's [Terms and Conditions Page](#).