

LAMTOR2 Antibody

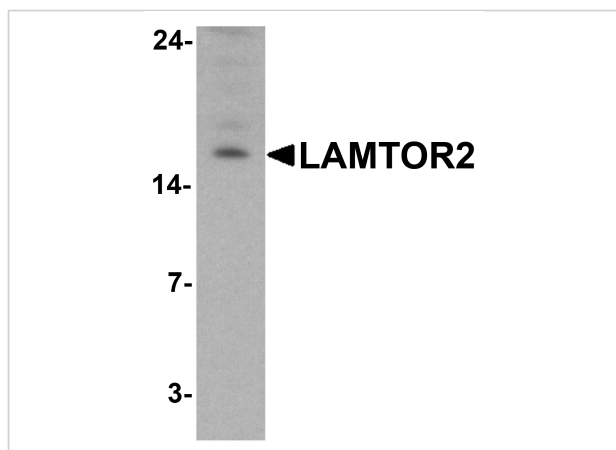
CATALOG NUMBER: 7711

Specifications

Host Species	Rabbit
Species Reactivity	Human, Mouse, Rat
Homology	Predicted species reactivity based on immunogen sequence: Bovine: (100%)
Immunogen	LAMTOR2 antibody was raised against an 18 amino acid peptide near the center of human LAMTOR2. The immunogen is located within amino acids 40 - 90 of LAMTOR2.
Conjugate	Unconjugated
Tested Applications	ELISA, IF, IHC-P, WB
User Note	Optimal dilutions for each application to be determined by the researcher.
Specificity	LAMTOR2 antibody is human, mouse and rat reactive. At least two isoforms of LAMTOR2 are known to exist; this antibody will detect both isoforms. LAMTOR2 antibody is predicted to not cross-react with other LAMTOR family proteins.
Predicted Molecular Weight	Predicted: 14 kDa Observed: 16 kDa

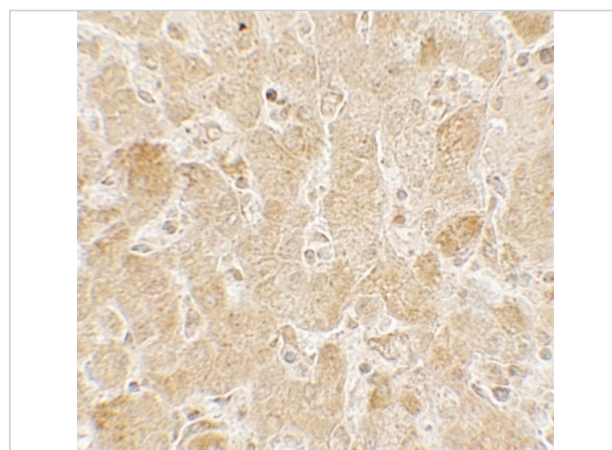
Properties

Purification	LAMTOR2 antibody is affinity chromatography purified via peptide column.
Clonality	Polyclonal
Isotype	IgG
Physical State	Liquid
Buffer	LAMTOR2 Antibody is supplied in PBS containing 0.02% sodium azide.
Concentration	1 mg/mL
Storage Conditions	LAMTOR2 antibody can be stored at 4°C for three months and -20°C, stable for up to one year.



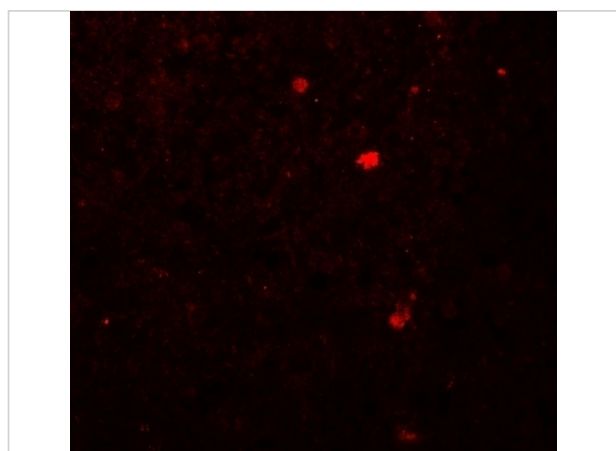
LAMTOR2 Antibody 1

Western blot analysis of LAMTOR2 in HepG2 cell lysate with LAMTOR2 antibody at 1 µg/ml.



LAMTOR2 Antibody 2

Immunohistochemistry of LAMTOR2 in human spleen tissue with LAMTOR2 antibody at 5 µg/mL.



LAMTOR2 Antibody 3

Immunofluorescence of LAMTOR2 in human spleen tissue with LAMTOR2 antibody at 20 µg/mL.

Disclaimer

Disclaimer

Optimal dilutions/concentrations should be determined by the end user. The information provided is a guideline for product use. This product is for research use only.

For research use only. For additional information, visit ProSci's [Terms and Conditions Page](#).