

IL-12A Antibody

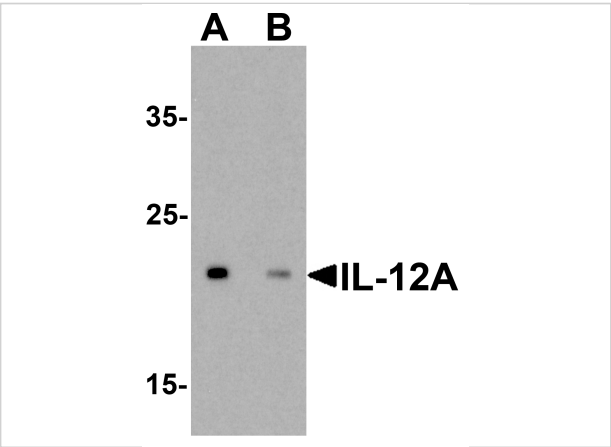
CATALOG NUMBER: 7497

Specifications

Host Species	Rabbit
Species Reactivity	Human
Homology	Predicted species reactivity based on immunogen sequence: Llama: (94%), Goat: (89%), Pig: (89%), Sheep: (89%), Horse: (83%), Bovine: (83%)
Immunogen	IL-12A antibody was raised against an 18 amino acid peptide near the carboxy terminus of human IL-12A. The immunogen is located within the last 50 amino acids of IL-12A.
Conjugate	Unconjugated
Tested Applications	ELISA, IF, IHC-P, WB
User Note	Optimal dilutions for each application to be determined by the researcher.
Specificity	IL-12A antibody is human specific. IL-12A antibody will not cross-react with IL-12B.
Predicted Molecular Weight	Predicted: 22 kDa Observed: 22 kDa

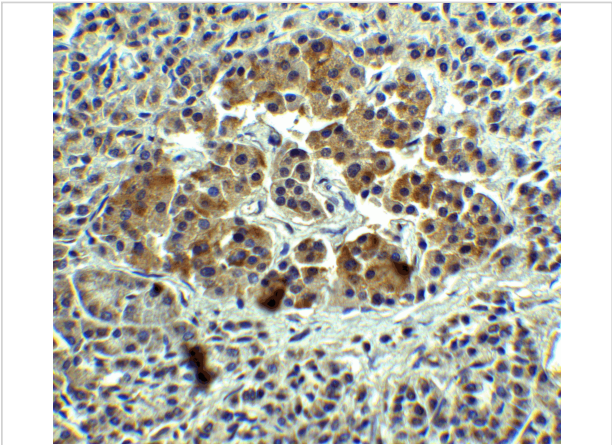
Properties

Purification	IL-12A antibody is affinity chromatography purified via peptide column.
Clonality	Polyclonal
Isotype	IgG
Physical State	Liquid
Buffer	IL-12A antibody is supplied in PBS containing 0.02% sodium azide.
Concentration	1 mg/mL
Storage Conditions	IL-12A antibody can be stored at 4°C for three months and -20°C, stable for up to one year.



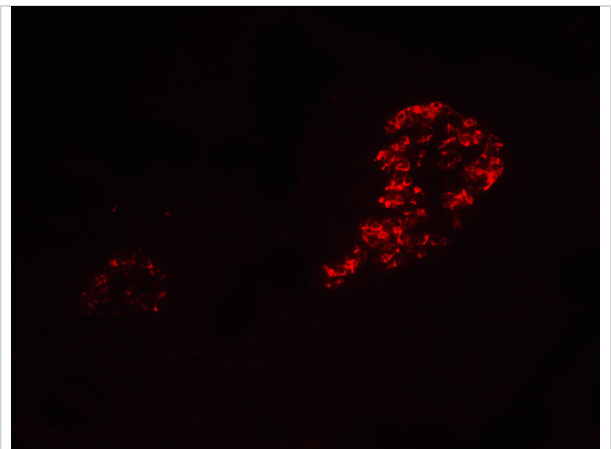
IL-12A Antibody 1

Western blot analysis of IL-12A in HeLa cell lysate with IL-12A antibody at 0.5 µg/ml in (A) the absence and (B) the presence of blocking peptide.



IL-12A Antibody 2

Immunohistochemistry of IL-12A in human pancreas tissue with IL-12A Antibody at 5 µg/mL.



IL-12A Antibody 3

Immunofluorescence of IL-12A in human pancreas tissue with IL-12A Antibody at 20 µg/mL.

Disclaimer

Disclaimer	Optimal dilutions/concentrations should be determined by the end user. The information provided is a guideline for product use. This product is for research use only.
------------	--

For research use only. For additional information, visit ProSci's [Terms and Conditions Page](#).