

## MMP9 Antibody

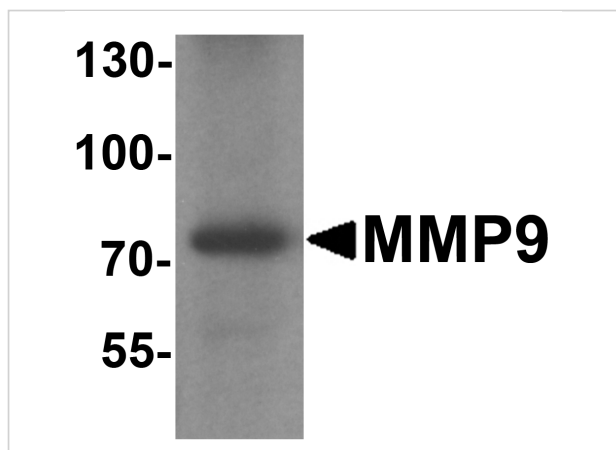
CATALOG NUMBER: 7471

### Specifications

<b>Host Species</b>	Rabbit
<b>Species Reactivity</b>	Human, Mouse, Rat
<b>Homology</b>	Predicted species reactivity based on immunogen sequence: Rabbit: (100%), Bovine: (100%)
<b>Immunogen</b>	MMP9 antibody was raised against a 16 amino acid peptide near the center of human MMP9. The immunogen is located within amino acids 260 - 310 of MMP9 .
<b>Conjugate</b>	Unconjugated
<b>Tested Applications</b>	ELISA, IF, IHC-P, WB
<b>User Note</b>	Optimal dilutions for each application to be determined by the researcher.
<b>Specificity</b>	MMP9 antibody is human, mouse and rat reactive. At least three isoforms of MMP9 are known to exist; this antibody only recognizes the two longest isoforms.
<b>Predicted Molecular Weight</b>	Predicted: 76 kDa Observed: 73kDa

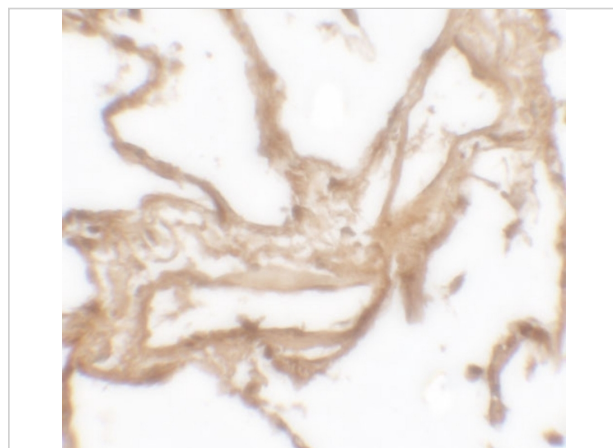
### Properties

<b>Purification</b>	MMP9 Antibody is affinity chromatography purified via peptide column.
<b>Clonality</b>	Polyclonal
<b>Isotype</b>	IgG
<b>Physical State</b>	Liquid
<b>Buffer</b>	MMP9 Antibody is supplied in PBS containing 0.02% sodium azide.
<b>Concentration</b>	1 mg/mL
<b>Storage Conditions</b>	MMP9 antibody can be stored at 4°C for three months and -20°C, stable for up to one year.



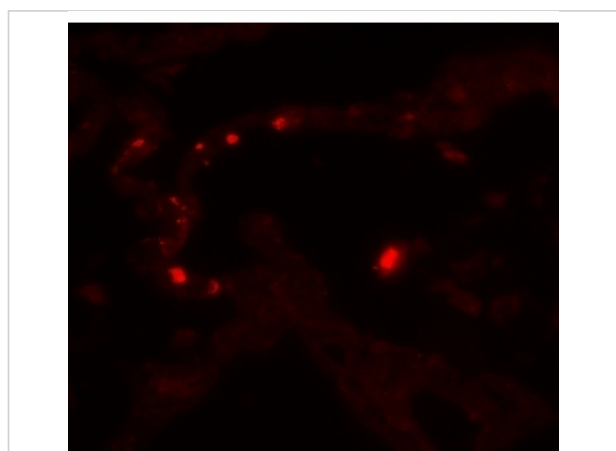
### MMP9 Antibody 1

Western blot analysis of MMP9 in mouse lung tissue lysate with MMP9 antibody at 1 µg/ml.



### MMP9 Antibody 2

Immunohistochemistry of MMP9 in human lung tissue with MMP9 antibody at 2.5 µg/mL.



### MMP9 Antibody 3

Immunofluorescence of MMP9 in human lung tissue with MMP9 antibody at 20 µg/mL.

## Disclaimer

#### Disclaimer

Optimal dilutions/concentrations should be determined by the end user. The information provided is a guideline for product use. This product is for research use only.

For research use only. For additional information, visit ProSci's [Terms and Conditions Page](#).