

## ERAP2 Antibody

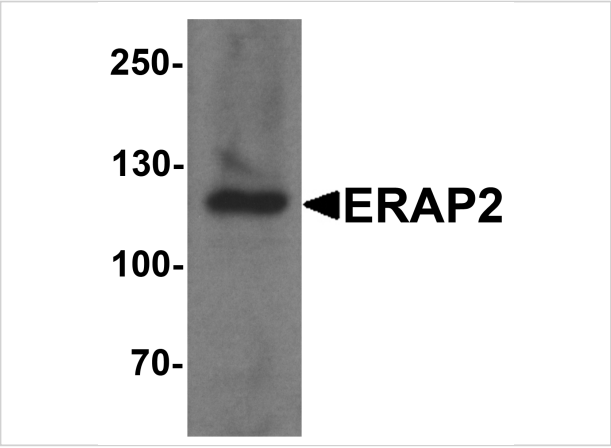
CATALOG NUMBER: 7469

### Specifications

Host Species	Rabbit
Species Reactivity	Human
Homology	Predicted species reactivity based on immunogen sequence: Bovine: (75%)
Immunogen	ERAP2 antibody was raised against a 17 amino acid peptide near the amino terminus of human ERAP2. The immunogen is located within amino acids 110 - 160 of ERAP2 .
Conjugate	Unconjugated
Tested Applications	ELISA, WB
User Note	Optimal dilutions for each application to be determined by the researcher.
Specificity	ERAP2 antibody is human reactive. Multiple isoforms of ERAP2 are known to exist. ERAP2 antibody is predicted to not cross-react with ERAP1.
Predicted Molecular Weight	Predicted: 106 kDa Observed: 120kDa

### Properties

Purification	ERAP2 Antibody is affinity chromatography purified via peptide column.
Clonality	Polyclonal
Isotype	IgG
Physical State	Liquid
Buffer	ERAP2 Antibody is supplied in PBS containing 0.02% sodium azide.
Concentration	1 mg/mL
Storage Conditions	ERAP2 antibody can be stored at 4°C for three months and -20°C, stable for up to one year.



ERAP2 Antibody 1

Western blot analysis of ERAP2 in human ovary tissue lysate with ERAP2 antibody at 1 µg/ml.

Disclaimer

Disclaimer	Optimal dilutions/concentrations should be determined by the end user. The information provided is a guideline for product use. This product is for research use only.
------------	--

For research use only. For additional information, visit ProSci's [Terms and Conditions Page](#).