

WFDC2 Antibody

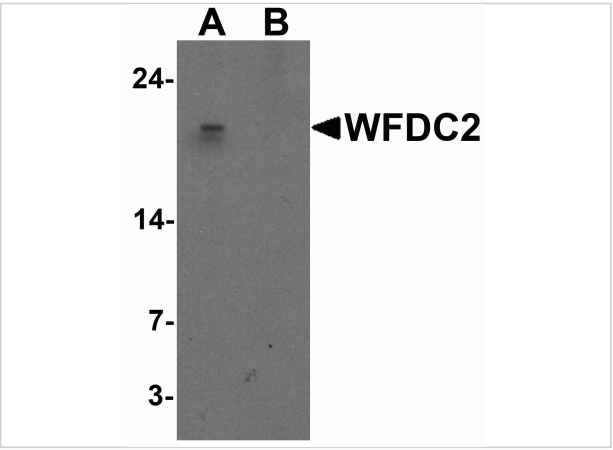
CATALOG NUMBER: 7459

Specifications

Host Species	Rabbit
Species Reactivity	Human
Homology	Predicted species reactivity based on immunogen sequence: Rabbit: (73%)
Immunogen	WFDC2 antibody was raised against a 16 amino acid peptide near the amino terminus of human WFDC2. The immunogen is located within the first 50 amino acids of WFDC2 .
Conjugate	Unconjugated
Tested Applications	ELISA, IF, IHC-P, WB
User Note	Optimal dilutions for each application to be determined by the researcher.
Specificity	WFDC2 antibody is human specific. Multiple isoforms of WFDC2 are known to exist.
Predicted Molecular Weight	Predicted: 14 kDa Observed: 20kDa

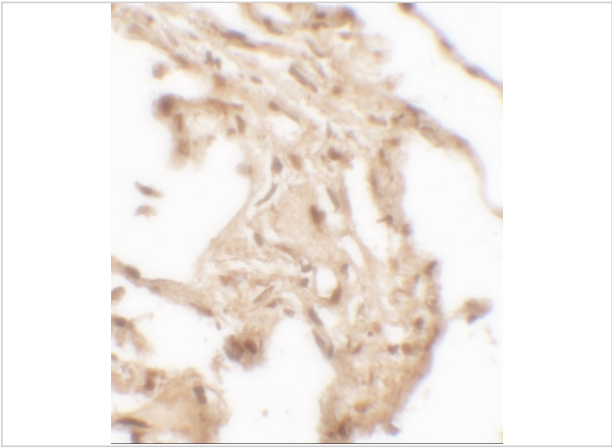
Properties

Purification	WFDC2 Antibody is affinity chromatography purified via peptide column.
Clonality	Polyclonal
Isotype	IgG
Physical State	Liquid
Buffer	WFDC2 Antibody is supplied in PBS containing 0.02% sodium azide.
Concentration	1 mg/mL
Storage Conditions	WFDC2 antibody can be stored at 4°C for three months and -20°C, stable for up to one year.



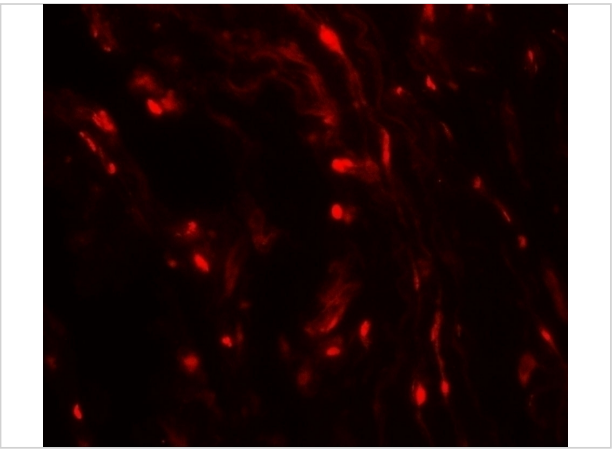
WFDC2 Antibody 1

Western blot analysis of WFDC2 in A549 cell lysate with WFDC2 antibody at 1 µg/ml in (A) the absence and (B) the presence of blocking peptide.



WFDC2 Antibody 2

Immunohistochemistry of WFDC2 in human lung tissue with WFDC2 antibody at 2.5 µg/mL.



WFDC2 Antibody 3

Immunofluorescence of WFDC2 in human lung tissue with WFDC2 antibody at 20 µg/mL.

Disclaimer

Disclaimer	Optimal dilutions/concentrations should be determined by the end user. The information provided is a guideline for product use. This product is for research use only.
------------	--

For research use only. For additional information, visit ProSci's [Terms and Conditions Page](#).