

## MTERFD1 Antibody

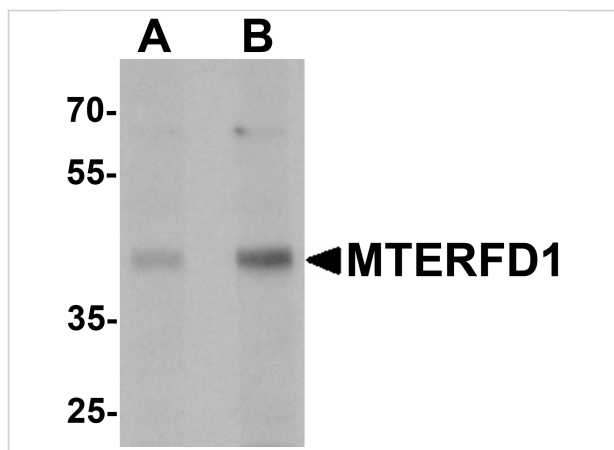
CATALOG NUMBER: 7281

### Specifications

Host Species	Rabbit
Species Reactivity	Human, Mouse
Homology	Predicted species reactivity based on immunogen sequence: Rat: (88%), Chicken: (88%)
Immunogen	MTERFD1 antibody was raised against a 17 amino acid peptide near the carboxy terminus of human MTERFD1 . The immunogen is located within the last 50 amino acids of MTERFD1.
Conjugate	Unconjugated
Tested Applications	ELISA, ICC, IF, WB
User Note	Optimal dilutions for each application to be determined by the researcher.
Specificity	At least three isoforms of MTERFD1 are known to exist. MTERFD1 antibody is predicted to not cross-react with other MTERFD protein family members.
Predicted Molecular Weight	Predicted: 46 kDa Observed: 42 kDa

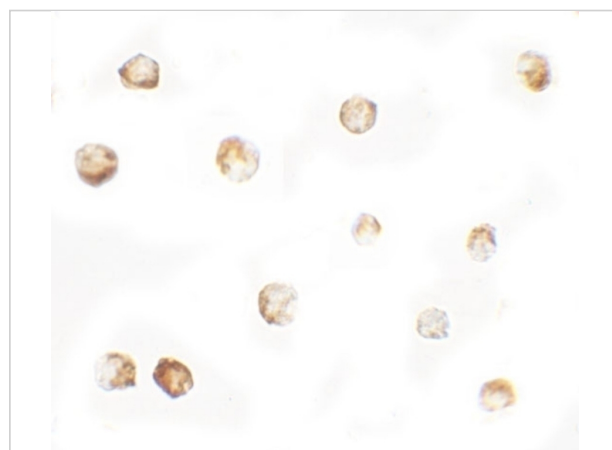
### Properties

Purification	MTERFD1 Antibody is affinity chromatography purified via peptide column.
Clonality	Polyclonal
Isotype	IgG
Physical State	Liquid
Buffer	MTERFD1 Antibody is supplied in PBS containing 0.02% sodium azide.
Concentration	1 mg/mL
Storage Conditions	MTERFD1 antibody can be stored at 4°C for three months and -20°C, stable for up to one year.



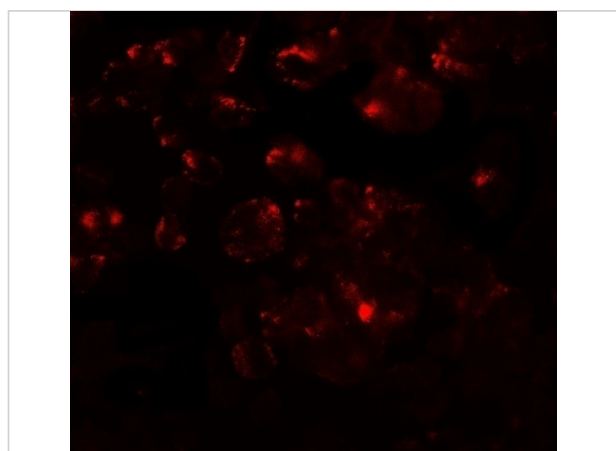
### MTERFD1 Antibody 1

Western blot analysis of MTERFD1 in 3T3 cell lysate with MTERFD1 antibody at (A) 1 and (B) 2  $\mu\text{g/mL}$ .



### MTERFD1 Antibody 2

Immunocytochemistry of MTERFD1 in 3T3 cells with MTERFD1 antibody at 5  $\mu\text{g/mL}$ .



### MTERFD1 Antibody 3

Immunofluorescence of MTERFD1 in 3T3 cells with MTERFD1 antibody at 20  $\mu\text{g/mL}$ .

## Disclaimer

#### Disclaimer

Optimal dilutions/concentrations should be determined by the end user. The information provided is a guideline for product use. This product is for research use only.

For research use only. For additional information, visit ProSci's [Terms and Conditions Page](#).