

## SHISA4 Antibody

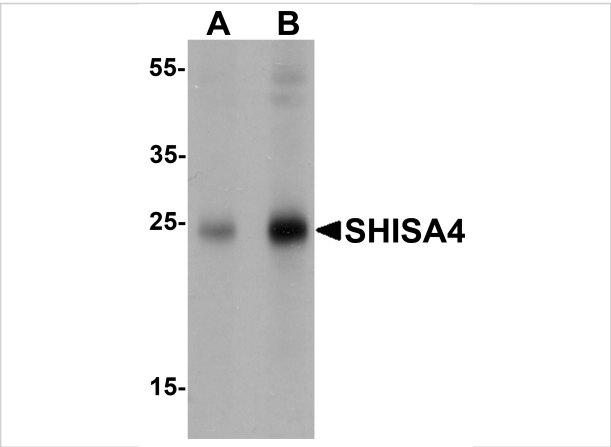
CATALOG NUMBER: 7277

### Specifications

Host Species	Rabbit
Species Reactivity	Human, Mouse
Immunogen	SHISA4 antibody was raised against a 15 amino acid peptide near the center of human SHISA4 . The immunogen is located within amino acids 100 - 150 of SHISA4.
Conjugate	Unconjugated
Tested Applications	ELISA, IF, IHC-P, WB
User Note	Optimal dilutions for each application to be determined by the researcher.
Specificity	SHISA4 antibody is predicted to not cross-react with other SHISA protein family members.
Predicted Molecular Weight	Predicted: 22 kDa Observed: 24 kDa

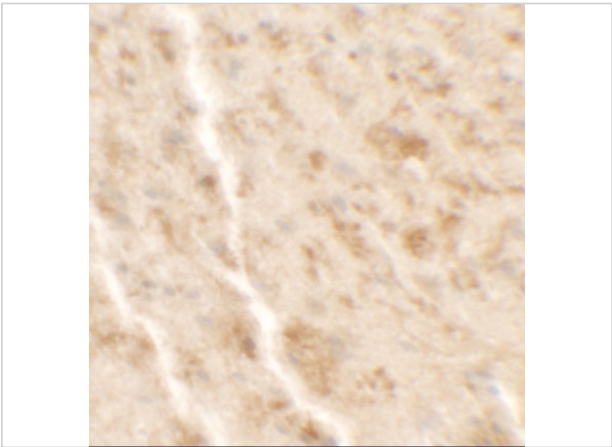
### Properties

Purification	SHISA4 Antibody is affinity chromatography purified via peptide column.
Clonality	Polyclonal
Isotype	IgG
Physical State	Liquid
Buffer	SHISA4 Antibody is supplied in PBS containing 0.02% sodium azide.
Concentration	1 mg/mL
Storage Conditions	SHISA4 antibody can be stored at 4°C for three months and -20°C, stable for up to one year.



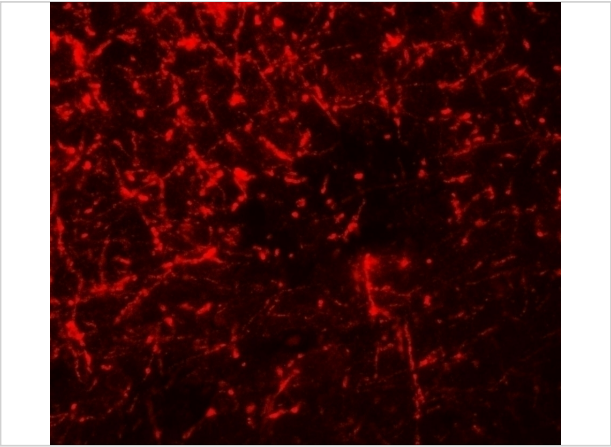
### SHISA4 Antibody 1

Western blot analysis of SHISA4 in human brain tissue lysate with SHISA4 antibody at (A) 1 and (B) 2  $\mu\text{g/mL}$ .



### SHISA4 Antibody 2

Immunohistochemistry of SHISA4 in mouse brain tissue with SHISA4 antibody at 2.5  $\mu\text{g/mL}$ .



### SHISA4 Antibody 3

Immunofluorescence of SHISA4 in mouse brain tissue with SHISA4 antibody at 20  $\mu\text{g/mL}$ .

## Disclaimer

Disclaimer	Optimal dilutions/concentrations should be determined by the end user. The information provided is a guideline for product use. This product is for research use only.
------------	--

For research use only. For additional information, visit ProSci's [Terms and Conditions Page](#).