

ATG2B Antibody

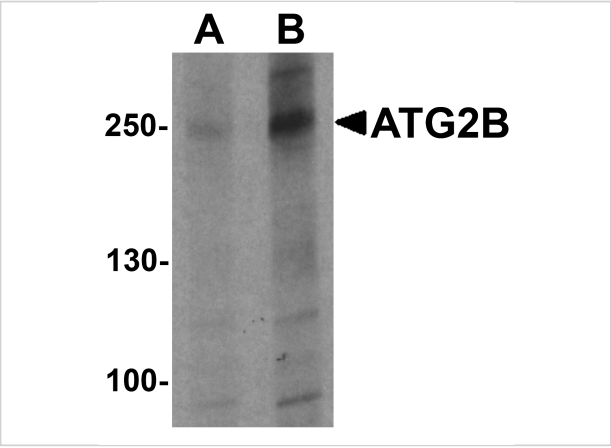
CATALOG NUMBER: 7005

Specifications

Host Species	Rabbit
Species Reactivity	Human
Immunogen	ATG2B antibody was raised against a 19 amino acid synthetic peptide near the amino terminus of human ATG2B. The immunogen is located within amino acids 450 - 500 of ATG2B.
Conjugate	Unconjugated
Tested Applications	ELISA, IF, WB
User Note	Optimal dilutions for each application to be determined by the researcher.
Specificity	ATG2B antibody is predicted to not cross-react with other ATG2A.
Predicted Molecular Weight	229 kDa

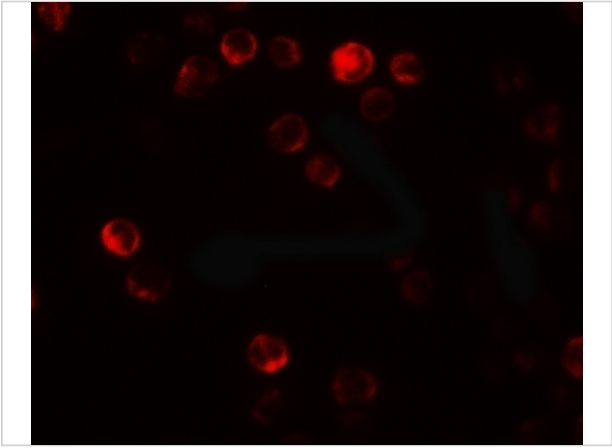
Properties

Purification	ATG2B Antibody is affinity chromatography purified via peptide column.
Clonality	Polyclonal
Isotype	IgG
Physical State	Liquid
Buffer	ATG2B Antibody is supplied in PBS containing 0.02% sodium azide.
Concentration	1 mg/mL
Storage Conditions	ATG2B antibody can be stored at 4°C for three months and -20°C, stable for up to one year. As with all antibodies care should be taken to avoid repeated freeze thaw cycles. Antibodies should not be exposed to prolonged high temperatures.



ATG2B Antibody 1

Western blot analysis of ATG2B in K562 cell lysate with ATG2B antibody at (A) 1 and (B) 2 µg/ml



ATG2B Antibody 2

Immunofluorescence of ATG2B in K562 cells with ATG2B antibody at 20 µg/mL.

Disclaimer

Disclaimer	Optimal dilutions/concentrations should be determined by the end user. The information provided is a guideline for product use. This product is for research use only.
------------	--

For research use only. For additional information, visit ProSci's [Terms and Conditions Page](#).