

## ANG Antibody

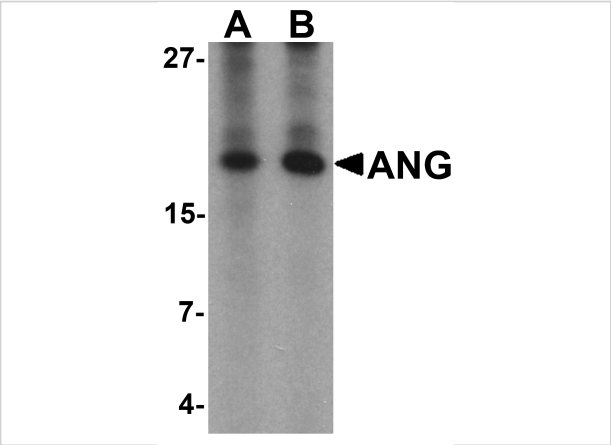
CATALOG NUMBER: 6983

### Specifications

Host Species	Rabbit
Species Reactivity	Human, Mouse, Rat
Homology	Predicted species reactivity based on immunogen sequence: Horse: (75%)
Immunogen	ANG antibody was raised against a 15 amino acid synthetic peptide near the center of human ANG. The immunogen is located within amino acids 70 - 120 of ANG.
Conjugate	Unconjugated
Tested Applications	ELISA, IF, WB
User Note	Optimal dilutions for each application to be determined by the researcher.
Specificity	Two alternatively spliced transcript variants have been observed.
Predicted Molecular Weight	16 kDa

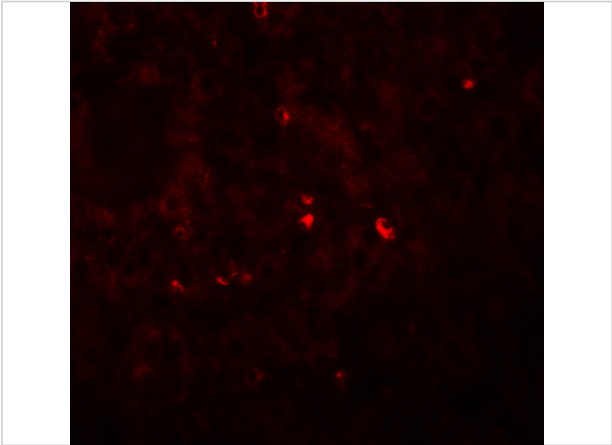
### Properties

Purification	ANG Antibody is affinity chromatography purified via peptide column.
Clonality	Polyclonal
Isotype	IgG
Physical State	Liquid
Buffer	ANG Antibody is supplied in PBS containing 0.02% sodium azide.
Concentration	1 mg/mL
Storage Conditions	ANG antibody can be stored at 4°C for three months and -20°C, stable for up to one year. As with all antibodies care should be taken to avoid repeated freeze thaw cycles. Antibodies should not be exposed to prolonged high temperatures.



ANG Antibody 1

Western blot analysis of ANG in rat liver tissue lysate with Ang antibody at (A) 1 and (B) 2  $\mu\text{g/mL}$ .



ANG Antibody 2

Immunofluorescence of ANG in human liver tissue with ANG antibody at 20  $\mu\text{g/mL}$ .

Disclaimer

Disclaimer	Optimal dilutions/concentrations should be determined by the end user. The information provided is a guideline for product use. This product is for research use only.
------------	--

For research use only. For additional information, visit ProSci's [Terms and Conditions Page](#).