

ZNF687 Antibody

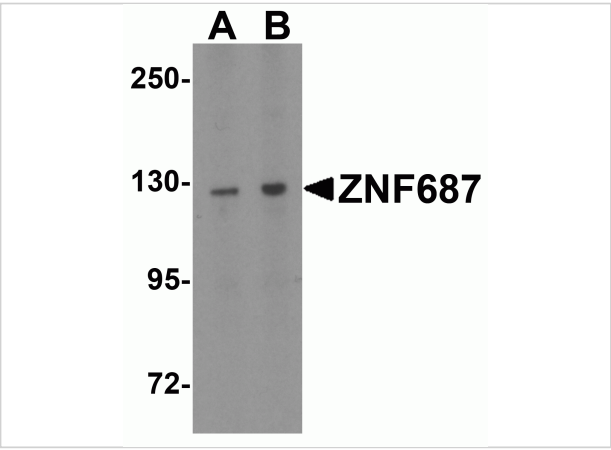
CATALOG NUMBER: 6861

Specifications

Host Species	Rabbit
Species Reactivity	Human
Homology	Predicted species reactivity based on immunogen sequence: Mouse: (82%)
Immunogen	ZNF687 antibody was raised against a 17 amino acid synthetic peptide near the carboxy terminus of human ZNF687. The immunogen is located within amino acids 1160 - 1210 of ZNF687.
Conjugate	Unconjugated
Tested Applications	ELISA, IF, WB
User Note	Optimal dilutions for each application to be determined by the researcher.
Specificity	ZNF687 antibody is human specific. At least three isoforms of ZNF687 are known to exist; this antibody will only detect the largest isoform.
Predicted Molecular Weight	Predicted: 125 kDa Observed: 129 kDa

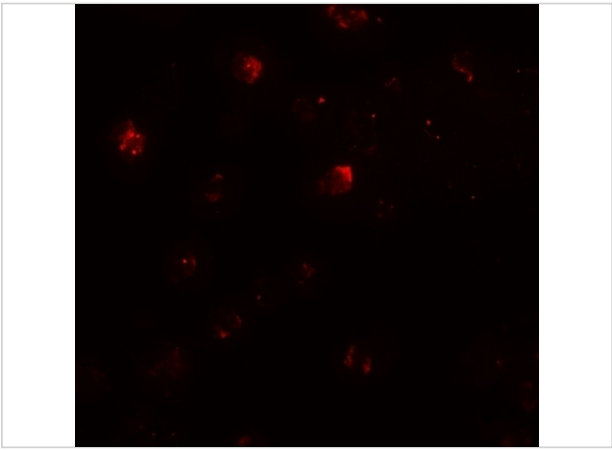
Properties

Purification	ZNF687 Antibody is affinity chromatography purified via peptide column.
Clonality	Polyclonal
Isotype	IgG
Physical State	Liquid
Buffer	ZNF687 Antibody is supplied in PBS containing 0.02% sodium azide.
Concentration	1 mg/mL
Storage Conditions	ZNF687 antibody can be stored at 4°C for three months and -20°C, stable for up to one year. As with all antibodies care should be taken to avoid repeated freeze thaw cycles. Antibodies should not be exposed to prolonged high temperatures.



ZNF687 Antibody 1

Western blot analysis of ZNF687 in HeLa cell lysate with ZNF687 antibody at (A) 1 and (B) 2 µg/mL.



ZNF687 Antibody 2

Immunofluorescence of ZNF687 in Jurkat cells with ZNF687 antibody at 20 µg/mL.

Disclaimer

Disclaimer	Optimal dilutions/concentrations should be determined by the end user. The information provided is a guideline for product use. This product is for research use only.
-------------------	------------------------------------------------------------------------------------------------------------------------------------------------------------------------

For research use only. For additional information, visit ProSci's [Terms and Conditions Page](#).