

GBP6 Antibody

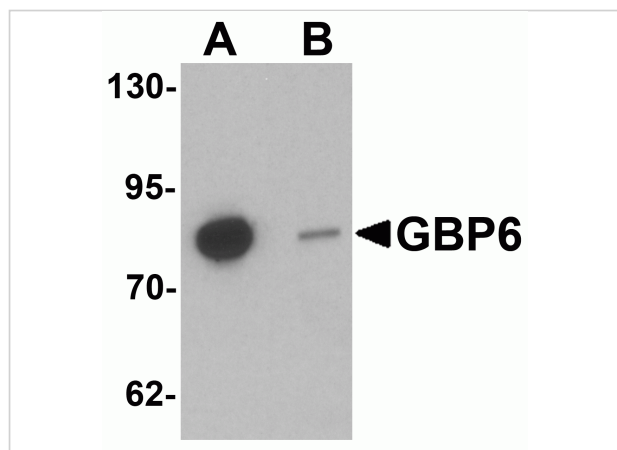
CATALOG NUMBER: 6707

Specifications

Host Species	Rabbit
Species Reactivity	Human, Mouse
Immunogen	GBP6 antibody was raised against a 15 amino acid synthetic peptide near the carboxy terminus of human GBP6. The immunogen is located within the last 50 amino acids of GBP6.
Conjugate	Unconjugated
Tested Applications	ELISA, ICC, IF, WB
User Note	Optimal dilutions for each application to be determined by the researcher.
Specificity	GBP6 antibody is predicted to not cross-react with other GBP family members.

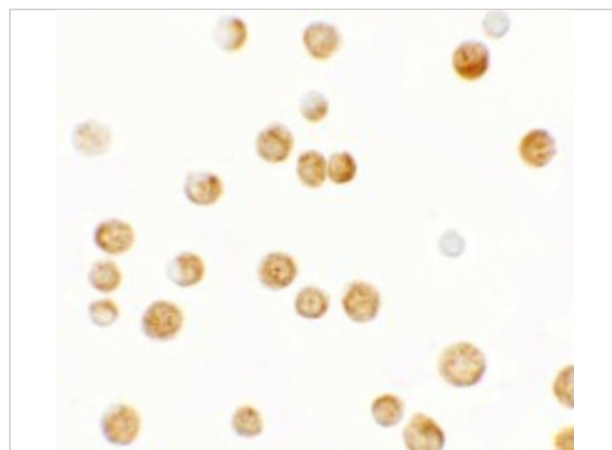
Properties

Purification	GBP6 Antibody is affinity chromatography purified via peptide column.
Clonality	Polyclonal
Isotype	IgG
Physical State	Liquid
Buffer	GBP6 Antibody is supplied in PBS containing 0.02% sodium azide.
Concentration	1 mg/mL
Storage Conditions	GBP6 antibody can be stored at 4°C for three months and -20°C, stable for up to one year. As with all antibodies care should be taken to avoid repeated freeze thaw cycles. Antibodies should not be exposed to prolonged high temperatures.



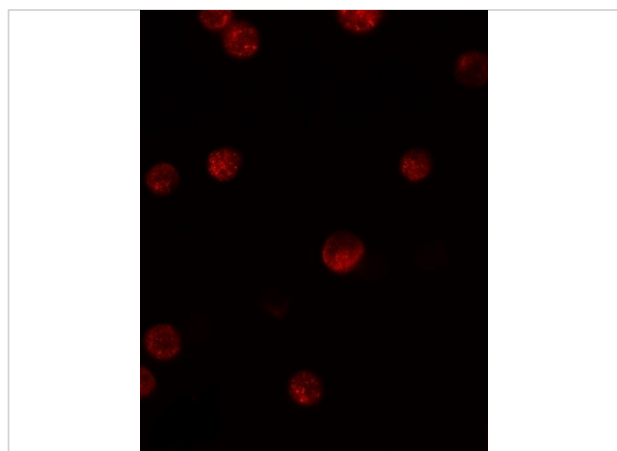
GBP6 Antibody 1

Western blot analysis of GBP6 in HeLa cell lysate with GBP6 antibody at 0.5 $\mu\text{g/mL}$ in (A) the absence and (B) the presence of blocking peptide.



GBP6 Antibody 2

Immunocytochemistry of GBP6 in HeLa cells with GBP6 antibody at 2.5 $\mu\text{g/mL}$.



GBP6 Antibody 3

Immunofluorescence of GBP6 in HeLa cells with GBP6 antibody at 5 $\mu\text{g/mL}$.

Disclaimer

Disclaimer

Optimal dilutions/concentrations should be determined by the end user. The information provided is a guideline for product use. This product is for research use only.

For research use only. For additional information, visit ProSci's [Terms and Conditions Page](#).