

SPINK2 Antibody

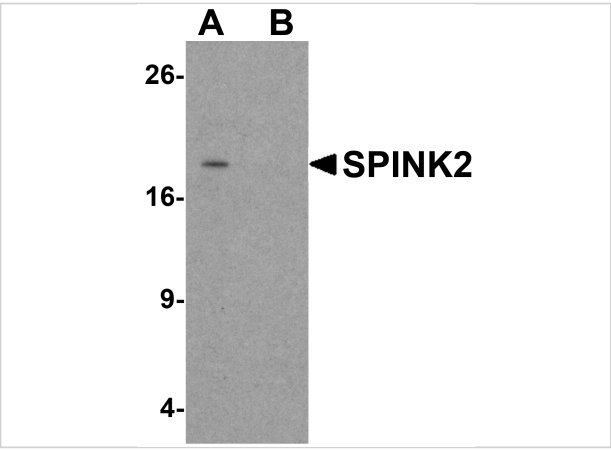
CATALOG NUMBER: 6667

Specifications

Host Species	Rabbit
Species Reactivity	Human, Mouse
Homology	Predicted species reactivity based on immunogen sequence: Rat: (100%)
Immunogen	SPINK2 antibody was raised against a 16 amino acid synthetic peptide near the carboxy terminus of mouse SPINK2. The immunogen is located within the last 50 amino acids of SPINK2.
Conjugate	Unconjugated
Tested Applications	ELISA, IF, IHC-P, WB
User Note	Optimal dilutions for each application to be determined by the researcher.
Specificity	SPINK2 antibody is predicted to not cross-react with other SPINK family members.
Predicted Molecular Weight	Predicted: 15 kDa Observed: 18 kDa

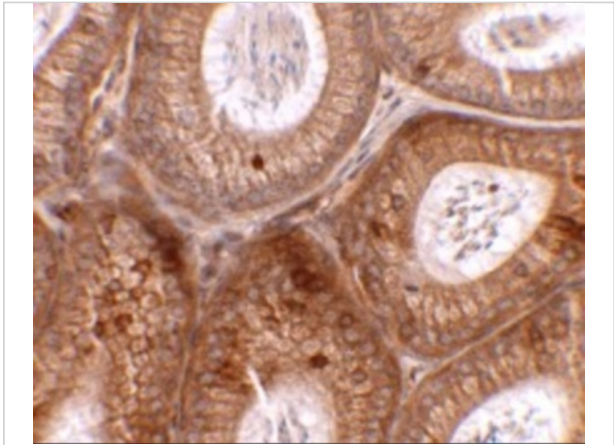
Properties

Purification	SPINK2 Antibody is affinity chromatography purified via peptide column.
Clonality	Polyclonal
Isotype	IgG
Physical State	Liquid
Buffer	SPINK2 Antibody is supplied in PBS containing 0.02% sodium azide.
Concentration	1 mg/mL
Storage Conditions	SPINK2 antibody can be stored at 4°C for three months and -20°C, stable for up to one year. As with all antibodies care should be taken to avoid repeated freeze thaw cycles. Antibodies should not be exposed to prolonged high temperatures.



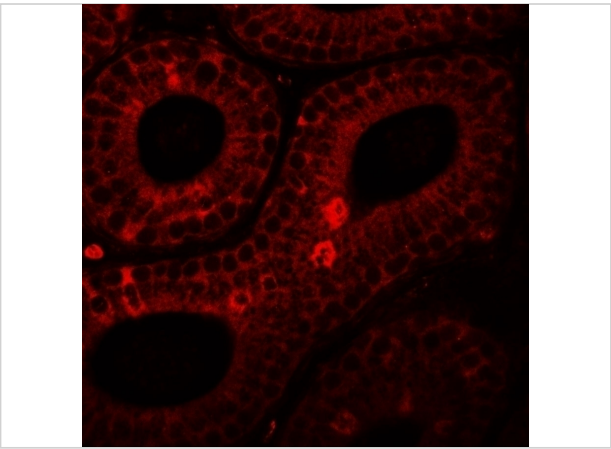
SPINK2 Antibody 1

Western blot analysis of SPINK2 in human testis tissue lysate with SPINK2 antibody at 1 $\mu\text{g/mL}$ in (A) the absence and (B) the presence of blocking peptide.



SPINK2 Antibody 2

Immunohistochemistry of SPINK2 in mouse testis tissue with SPINK2 antibody at 2.5 $\mu\text{g/mL}$.



SPINK2 Antibody 3

Immunofluorescence of SPINK2 in mouse testis tissue with SPINK2 antibody at 20 $\mu\text{g/mL}$.

Disclaimer

Disclaimer	Optimal dilutions/concentrations should be determined by the end user. The information provided is a guideline for product use. This product is for research use only.
-------------------	--

For research use only. For additional information, visit ProSci's [Terms and Conditions Page](#).