

DISP1 Antibody

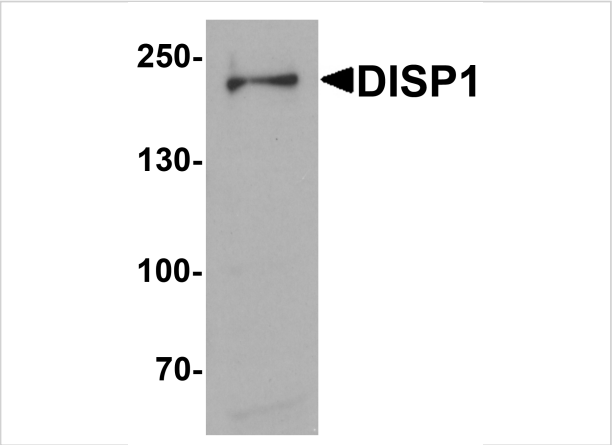
CATALOG NUMBER: 6629

Specifications

Host Species	Rabbit
Species Reactivity	Human, Mouse
Immunogen	DISP1 antibody was raised against a 16 amino acid synthetic peptide near the amino terminus of human DISP1. The immunogen is located within amino acids 20 - 70 of DISP1.
Conjugate	Unconjugated
Tested Applications	ELISA, IF, IHC-P, WB
User Note	Optimal dilutions for each application to be determined by the researcher.
Specificity	At least two isoforms of DISP1 are known to exist; this antibody will detect both isoforms. DISP1 antibody is predicted to not cross-react with EMX1.

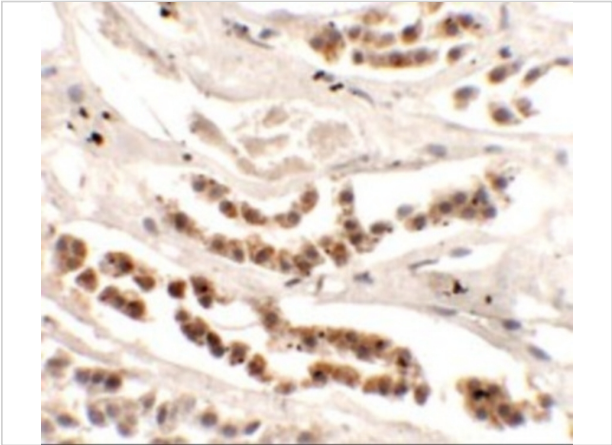
Properties

Purification	DISP1 Antibody is affinity chromatography purified via peptide column.
Clonality	Polyclonal
Isotype	IgG
Physical State	Liquid
Buffer	DISP1 Antibody is supplied in PBS containing 0.02% sodium azide.
Concentration	1 mg/mL
Storage Conditions	DISP1 antibody can be stored at 4°C for three months and -20°C, stable for up to one year. As with all antibodies care should be taken to avoid repeated freeze thaw cycles. Antibodies should not be exposed to prolonged high temperatures.



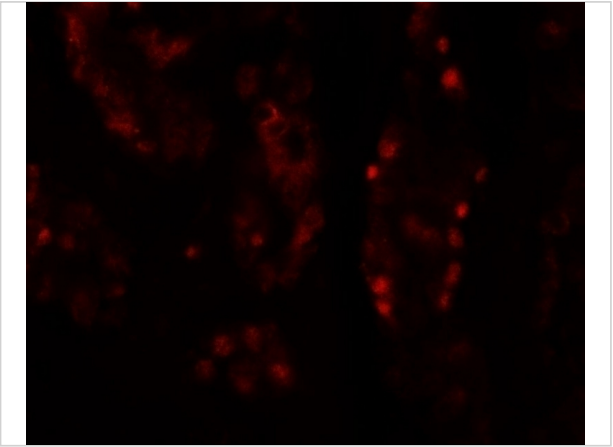
DISP1 Antibody 1

Western blot analysis of DISP1 in 3T3 cell lysate with DISP1 antibody at 1 µg/mL.



DISP1 Antibody 2

Immunohistochemistry of DISP1 in human kidney tissue with DISP1 antibody at 2.5 µg/mL.



DISP1 Antibody 3

Immunofluorescence of DISP1 in human kidney tissue with DISP1 antibody at 20 µg/mL.

Disclaimer

Disclaimer	Optimal dilutions/concentrations should be determined by the end user. The information provided is a guideline for product use. This product is for research use only.
------------	--

For research use only. For additional information, visit ProSci's [Terms and Conditions Page](#).