

EMX1 Antibody

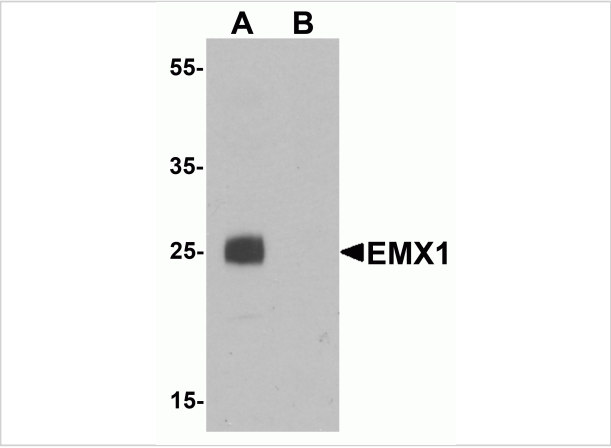
CATALOG NUMBER: 6625

Specifications

| | |
|---------------------|--|
| Host Species | Chicken |
| Species Reactivity | Human, Mouse, Rat |
| Immunogen | EMX1 antibody was raised against a 16 amino acid synthetic peptide near the amino terminus of human EMX1. The immunogen is located within amino acids 50 - 100 of EMX1. |
| Conjugate | Unconjugated |
| Tested Applications | ELISA, WB |
| User Note | Optimal dilutions for each application to be determined by the researcher. |
| Specificity | At least two isoforms of EMX1 are known to exist; this antibody will detect the longer isoform. EMX1 antibody is predicted to not cross-react with other EMX family members. |

Properties

| | |
|--------------------|--|
| Purification | EMX1 Antibody is affinity chromatography purified via peptide column. |
| Clonality | Polyclonal |
| Isotype | IgY |
| Physical State | Liquid |
| Buffer | EMX1 Antibody is supplied in PBS containing 0.02% sodium azide. |
| Concentration | 1 mg/mL |
| Storage Conditions | EMX1 antibody can be stored at 4°C for three months and -20°C, stable for up to one year. As with all antibodies care should be taken to avoid repeated freeze thaw cycles. Antibodies should not be exposed to prolonged high temperatures. |



EMX1 Antibody 1

Western blot analysis of EMX1 in rat liver tissue lysate with EMX1 antibody at 1 µg/mL in (A) the absence and (B) the presence of blocking peptide.

Disclaimer

| | |
|------------|--|
| Disclaimer | Optimal dilutions/concentrations should be determined by the end user. The information provided is a guideline for product use. This product is for research use only. |
|------------|--|

For research use only. For additional information, visit ProSci's [Terms and Conditions Page](#).