

## ZGPAT Antibody

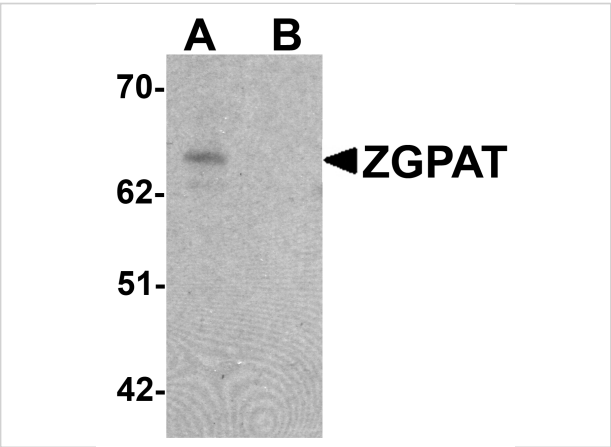
CATALOG NUMBER: 6611

### Specifications

Host Species	Chicken
Species Reactivity	Human
Homology	Predicted species reactivity based on immunogen sequence: Sheep: (100%), Bovine: (100%)
Immunogen	ZGPAT antibody was raised against a 15 amino acid synthetic peptide near the carboxy terminus of human ZGPAT. The immunogen is located within the last 50 amino acids of ZGPAT.
Conjugate	Unconjugated
Tested Applications	ELISA, IF, WB
User Note	Optimal dilutions for each application to be determined by the researcher.
Specificity	Multiple isoforms of ZGPAT are known to exist.

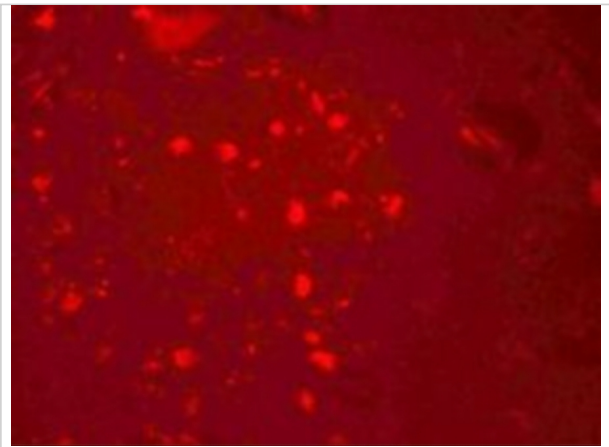
### Properties

Purification	ZGPAT Antibody is affinity chromatography purified via peptide column.
Clonality	Polyclonal
Isotype	IgY
Physical State	Liquid
Buffer	ZGPAT Antibody is supplied in PBS containing 0.02% sodium azide.
Concentration	1 mg/mL
Storage Conditions	ZGPAT antibody can be stored at 4°C for three months and -20°C, stable for up to one year. As with all antibodies care should be taken to avoid repeated freeze thaw cycles. Antibodies should not be exposed to prolonged high temperatures.



ZGPAT Antibody 1

Western blot analysis of ZGPAT in SK-N-SH cell lysate with ZGPAT antibody at 1 µg/mL in (A) the absence and (B) the presence of blocking peptide.



ZGPAT Antibody 2

Immunofluorescence of ZGPAT in human brain cells with ZGPAT antibody at 20 µg/mL.

Disclaimer

Disclaimer	Optimal dilutions/concentrations should be determined by the end user. The information provided is a guideline for product use. This product is for research use only.
------------	--

For research use only. For additional information, visit ProSci's [Terms and Conditions Page](#).