

LEMD1 Antibody

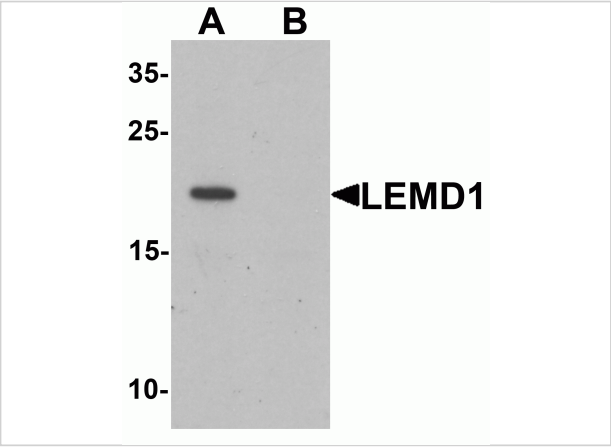
CATALOG NUMBER: 6599

Specifications

Host Species	Rabbit
Species Reactivity	Human, Mouse
Immunogen	LEMD1 antibody was raised against a 19 amino acid synthetic peptide near the center of human LEMD1. The immunogen is located within amino acids 90 - 140 of LEMD1.
Conjugate	Unconjugated
Tested Applications	ELISA, WB
User Note	Optimal dilutions for each application to be determined by the researcher.
Specificity	At least six isoforms of LEMD1 are known to exist; this antibody will detect the longest isoform. LEMD1 antibody is predicted to not cross-react with LEMD2 and LEMD3.

Properties

Purification	LEMD1 Antibody is affinity chromatography purified via peptide column.
Clonality	Polyclonal
Isotype	IgG
Physical State	Liquid
Buffer	LEMD1 Antibody is supplied in PBS containing 0.02% sodium azide.
Concentration	1 mg/mL
Storage Conditions	LEMD1 antibody can be stored at 4°C for three months and -20°C, stable for up to one year. As with all antibodies care should be taken to avoid repeated freeze thaw cycles. Antibodies should not be exposed to prolonged high temperatures.



LEMD1 Antibody 1

Western blot analysis of LEMD1 in A20 cell lysate with LEMD1 antibody at 1 µg/mL in (A) the absence and (B) the presence of blocking peptide.

Disclaimer

Disclaimer	Optimal dilutions/concentrations should be determined by the end user. The information provided is a guideline for product use. This product is for research use only.
------------	--

For research use only. For additional information, visit ProSci's [Terms and Conditions Page](#).