

SPATA6 Antibody

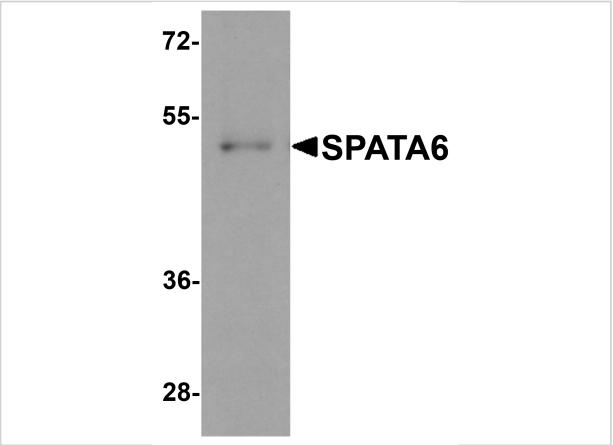
CATALOG NUMBER: 6555

Specifications

Host Species	Rabbit
Species Reactivity	Human, Mouse, Rat
Homology	Predicted species reactivity based on immunogen sequence: Bovine: (100%)
Immunogen	SPATA6 antibody was raised against a 14 amino acid synthetic peptide near the carboxy terminus of human SPATA6. The immunogen is located within amino acids 400 - 450 of SPATA6.
Conjugate	Unconjugated
Tested Applications	ELISA, IF, IHC-P, WB
User Note	Optimal dilutions for each application to be determined by the researcher.
Specificity	At least three isoforms of SPATA6 are known to exist; this antibody will detect only the longest two isoforms. SPATA6 antibody is predicted to not cross-react with other SPATA protein family members.

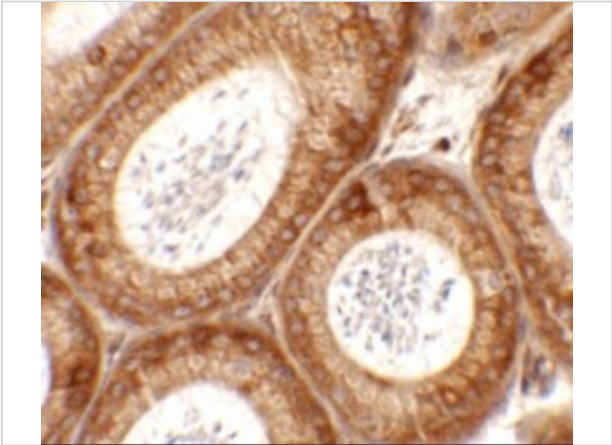
Properties

Purification	SPATA6 Antibody is affinity chromatography purified via peptide column.
Clonality	Polyclonal
Isotype	IgG
Physical State	Liquid
Buffer	SPATA6 Antibody is supplied in PBS containing 0.02% sodium azide.
Concentration	1 mg/mL
Storage Conditions	SPATA6 antibody can be stored at 4°C for three months and -20°C, stable for up to one year. As with all antibodies care should be taken to avoid repeated freeze thaw cycles. Antibodies should not be exposed to prolonged high temperatures.



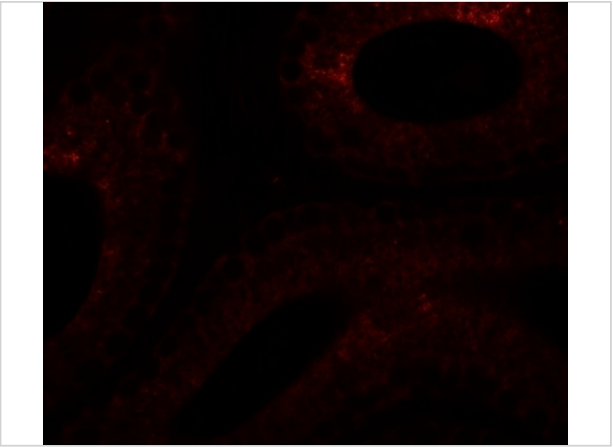
SPATA6 Antibody 1

Western blot analysis of SPATA6 in A20 cell lysate with SPATA6 antibody at 1 µg/mL.



SPATA6 Antibody 2

Immunohistochemistry of SPATA6 in mouse testis tissue with SPATA6 antibody at 2.5 µg/mL.



SPATA6 Antibody 3

Immunofluorescence of SPATA6 in mouse testis tissue with SPATA6 antibody at 20 µg/mL.

Disclaimer

Disclaimer	Optimal dilutions/concentrations should be determined by the end user. The information provided is a guideline for product use. This product is for research use only.
-------------------	--

For research use only. For additional information, visit ProSci's [Terms and Conditions Page](#).