

ECRG1 Antibody

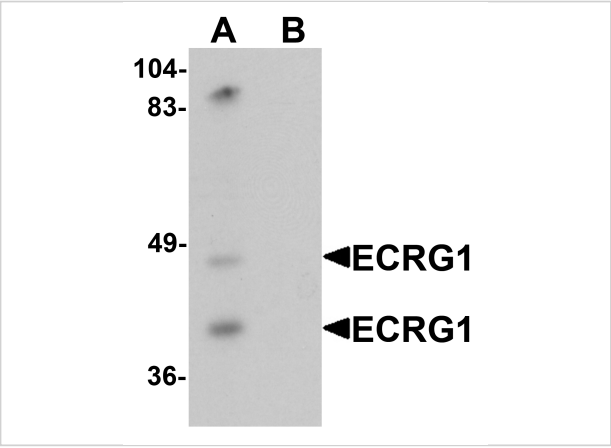
CATALOG NUMBER: 6521

Specifications

Host Species	Chicken
Species Reactivity	Human, Mouse, Rat
Immunogen	ECRG1 antibody was raised against a 16 amino acid synthetic peptide near the carboxy terminus of human ECRG1. The immunogen is located within amino acids 300 - 350 of ECRG1.
Conjugate	Unconjugated
Tested Applications	ELISA, WB
User Note	Optimal dilutions for each application to be determined by the researcher.
Specificity	At least two isoforms of ECRG1 are known to exist; ECRG1 antibody is predicted to not cross-react with other ECRG family members.

Properties

Purification	ECRG1 Antibody is affinity chromatography purified via peptide column.
Clonality	Polyclonal
Isotype	IgY
Physical State	Liquid
Buffer	ECRG1 Antibody is supplied in PBS containing 0.02% sodium azide.
Concentration	1 mg/mL
Storage Conditions	ECRG1 antibody can be stored at 4°C for three months and -20°C, stable for up to one year. As with all antibodies care should be taken to avoid repeated freeze thaw cycles. Antibodies should not be exposed to prolonged high temperatures.



ECRG1 Antibody 1

Western blot analysis of ECRG1 in mouse liver tissue lysate with ECRG1 antibody at 1 µg/mL in (A) the absence and (B) the presence of blocking peptide.

Disclaimer

Disclaimer	Optimal dilutions/concentrations should be determined by the end user. The information provided is a guideline for product use. This product is for research use only.
------------	--

For research use only. For additional information, visit ProSci's [Terms and Conditions Page](#).