

LY6K Antibody

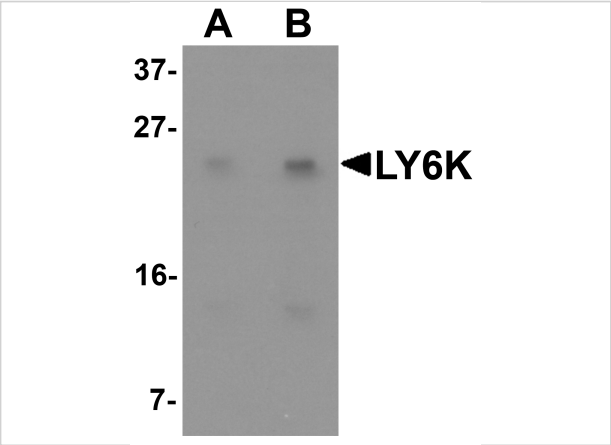
CATALOG NUMBER: 6437

Specifications

Host Species	Rabbit
Species Reactivity	Human, Mouse, Rat
Immunogen	LY6K antibody was raised against an 18 amino acid synthetic peptide near the amino terminus of human LY6K. The immunogen is located within the first 50 amino acids of LY6K.
Conjugate	Unconjugated
Tested Applications	ELISA, WB
User Note	Optimal dilutions for each application to be determined by the researcher.
Specificity	Multiple isoforms of LY6K are known to exist.

Properties

Purification	LY6K Antibody is affinity chromatography purified via peptide column.
Clonality	Polyclonal
Isotype	IgG
Physical State	Liquid
Buffer	LY6K Antibody is supplied in PBS containing 0.02% sodium azide.
Concentration	1 mg/mL
Storage Conditions	LY6K antibody can be stored at 4°C for three months and -20°C, stable for up to one year. As with all antibodies care should be taken to avoid repeated freeze thaw cycles. Antibodies should not be exposed to prolonged high temperatures.



LY6K Antibody 1

Western blot analysis of LY6K in HeLa cell lysate with LY6K antibody at (A) 1 and (B) 2 µg/mL.

Disclaimer

Disclaimer	Optimal dilutions/concentrations should be determined by the end user. The information provided is a guideline for product use. This product is for research use only.
------------	--

For research use only. For additional information, visit ProSci's [Terms and Conditions Page](#).