

HDGFRP2 Antibody

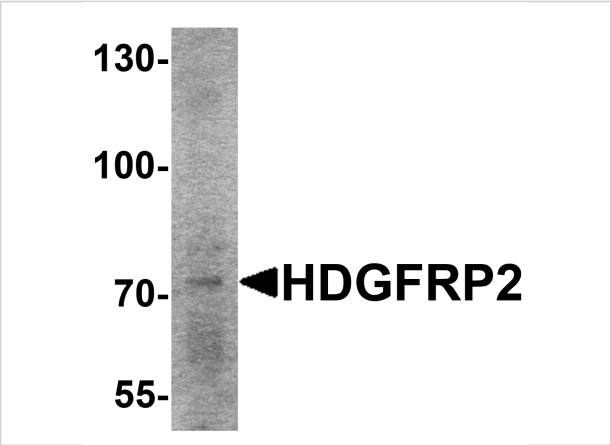
CATALOG NUMBER: 6411

Specifications

Host Species	Rabbit
Species Reactivity	Human, Mouse, Rat
Homology	Predicted species reactivity based on immunogen sequence: Chicken: (94%)
Immunogen	HDGFRP2 antibody was raised against an 18 amino acid synthetic peptide near the amino terminus of human HDGFRP2. The immunogen is located within amino acids 50 - 100 of HDGFRP2.
Conjugate	Unconjugated
Tested Applications	ELISA, IF, IHC-P, WB
User Note	Optimal dilutions for each application to be determined by the researcher.
Specificity	At least two isoforms of HDGFRP2 are known to exist; this antibody will recognize both isoforms. This antibody is predicted to not cross-react with other HDGFRP family members

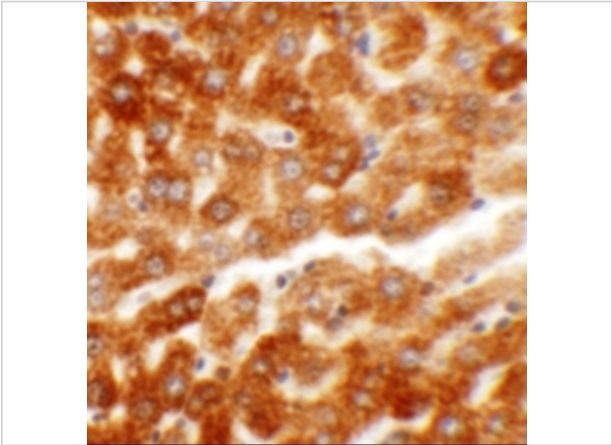
Properties

Purification	HDGFRP2 Antibody is affinity chromatography purified via peptide column.
Clonality	Polyclonal
Isotype	IgG
Physical State	Liquid
Buffer	HDGFRP2 Antibody is supplied in PBS containing 0.02% sodium azide.
Concentration	1 mg/mL
Storage Conditions	HDGFRP2 antibody can be stored at 4°C for three months and -20°C, stable for up to one year. As with all antibodies care should be taken to avoid repeated freeze thaw cycles. Antibodies should not be exposed to prolonged high temperatures.



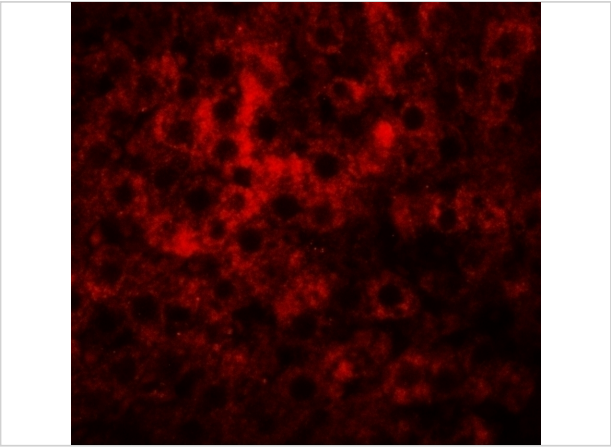
HDGFRP2 Antibody 1

Western blot analysis of HDGFRP2 in rat lung tissue lysate with HDGFRP2 antibody at 2 µg/mL .



HDGFRP2 Antibody 2

Immunohistochemistry of HDGFRP2 in rat liver tissue with HDGFRP2 antibody at 5 µg/mL.



HDGFRP2 Antibody 3

Immunofluorescence of HDGFRP2 in rat liver tissue with HDGFRP2 antibody at 20 µg/mL.

Disclaimer

Disclaimer	Optimal dilutions/concentrations should be determined by the end user. The information provided is a guideline for product use. This product is for research use only.
------------	--

For research use only. For additional information, visit ProSci's [Terms and Conditions Page](#).