

SPRYD4 Antibody

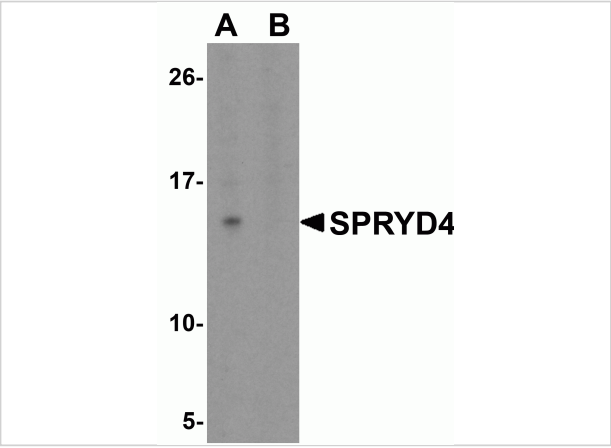
CATALOG NUMBER: 6407

Specifications

Host Species	Rabbit
Species Reactivity	Human, Mouse, Rat
Homology	Predicted species reactivity based on immunogen sequence: Bovine: (89%), Pig: (89%)
Immunogen	SPRYD4 antibody was raised against an 18 amino acid synthetic peptide near the center of human SPRYD4. The immunogen is located within amino acids 70 - 120 of SPRYD4.
Conjugate	Unconjugated
Tested Applications	ELISA, IF, IHC-P, WB
User Note	Optimal dilutions for each application to be determined by the researcher.
Specificity	SPRYD4 antibody is predicted to not cross-react with other SPRYD protein family members. At least two isoforms of SPRYD4 are known to exist; this antibody will detect both isoforms.

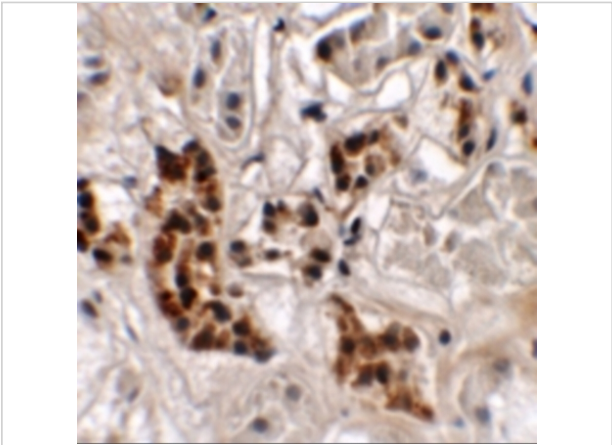
Properties

Purification	SPRYD4 Antibody is affinity chromatography purified via peptide column.
Clonality	Polyclonal
Isotype	IgG
Physical State	Liquid
Buffer	SPRYD4 Antibody is supplied in PBS containing 0.02% sodium azide.
Concentration	1 mg/mL
Storage Conditions	SPRYD4 antibody can be stored at 4°C for three months and -20°C, stable for up to one year. As with all antibodies care should be taken to avoid repeated freeze thaw cycles. Antibodies should not be exposed to prolonged high temperatures.



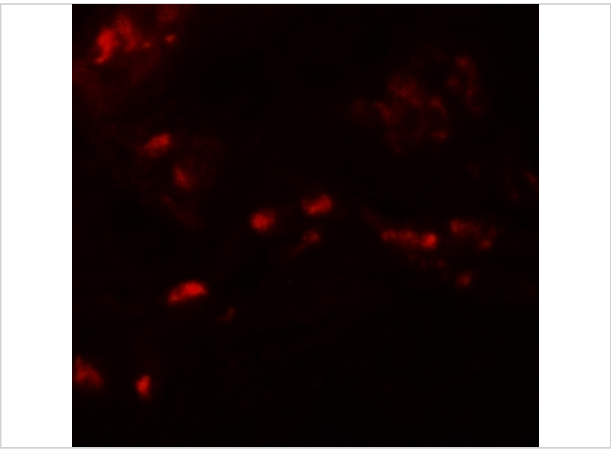
SPRYD4 Antibody 1

Western blot analysis of SPRYD4 in fetal human liver tissue lysate with SPRYD4 antibody at 1 µg/mL in (A) the absence and (B) the presence of blocking peptide



SPRYD4 Antibody 2

Immunohistochemistry of SPRYD4 in human kidney tissue with SPRYD4 antibody at 2.5 µg/mL.



SPRYD4 Antibody 3

Immunofluorescence of SPRYD4 in human kidney tissue with SPRYD4 antibody at 20 µg/mL.

Disclaimer

Disclaimer	Optimal dilutions/concentrations should be determined by the end user. The information provided is a guideline for product use. This product is for research use only.
------------	--

For research use only. For additional information, visit ProSci's [Terms and Conditions Page](#).