

IRF4 Antibody

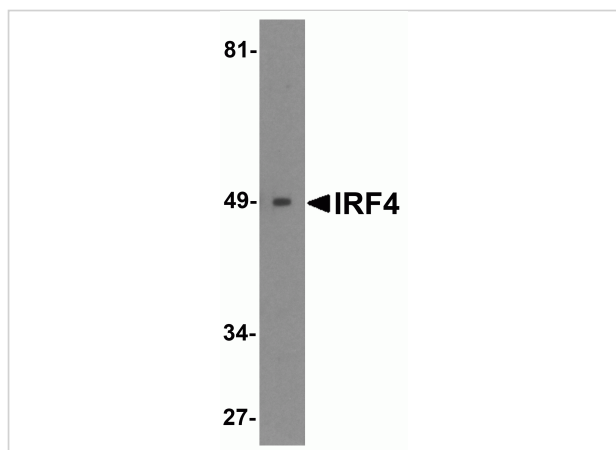
CATALOG NUMBER: 6307

Specifications

Host Species	Rabbit
Species Reactivity	Human, Mouse, Rat
Immunogen	IRF4 antibody was raised against a 16 amino acid synthetic peptide near the carboxy terminus of human IRF4. The immunogen is located within the last 50 amino acids of IRF4.
Conjugate	Unconjugated
Tested Applications	ELISA, ICC, IF, WB
User Note	Optimal dilutions for each application to be determined by the researcher.
Specificity	IRF4 antibody is predicted to not cross-react with other IRF protein family members. IRF4 often migrates at a higher than predicted molecular weight in SDS-PAGE.

Properties

Purification	IRF4 Antibody is affinity chromatography purified via peptide column.
Clonality	Polyclonal
Isotype	IgG
Physical State	Liquid
Buffer	IRF4 Antibody is supplied in PBS containing 0.02% sodium azide.
Concentration	1 mg/mL
Storage Conditions	IRF4 antibody can be stored at 4 °C, stable for one year. As with all antibodies care should be taken to avoid repeated freeze thaw cycles. Antibodies should not be exposed to prolonged high temperatures.



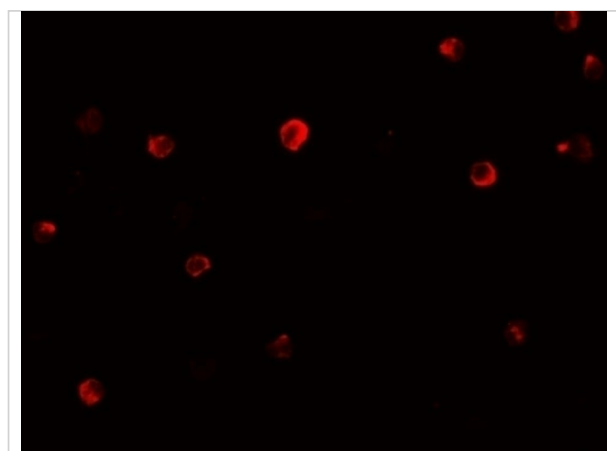
IRF4 Antibody 1

Western blot analysis of IRF4 in Ramos cell lysate with IRF4 antibody at 0.5 µg/mL.



IRF4 Antibody 2

Immunocytochemistry of IRF4 in Jurkat cells with IRF4 antibody at 10 µg/mL.



IRF4 Antibody 3

Immunofluorescence of IRF4 in Jurkat cells with IRF4 antibody at 20 µg/mL.

Disclaimer

Disclaimer

Optimal dilutions/concentrations should be determined by the end user. The information provided is a guideline for product use. This product is for research use only.

For research use only. For additional information, visit ProSci's [Terms and Conditions Page](#).