

PRR5L Antibody

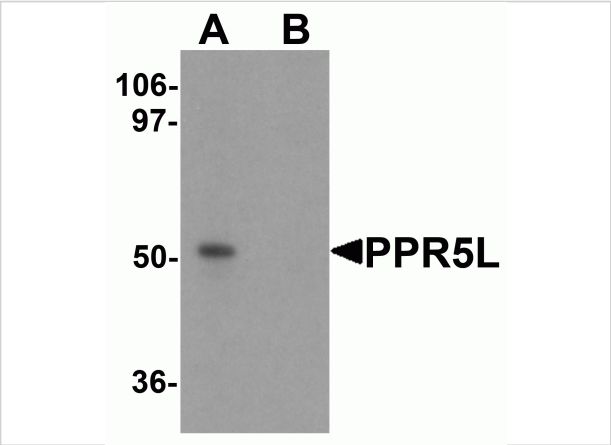
CATALOG NUMBER: 6293

Specifications

Host Species	Rabbit
Species Reactivity	Human, Mouse
Homology	Predicted species reactivity based on immunogen sequence: Bovine: (100%), Rat: (88%)
Immunogen	PRR5L antibody was raised against a 17 amino acid synthetic peptide near the center of human PRR5L. The immunogen is located within amino acids 220 - 270 of PRR5L.
Conjugate	Unconjugated
Tested Applications	ELISA, ICC, IF, WB
User Note	Optimal dilutions for each application to be determined by the researcher.
Specificity	At least three isoforms of PRR5L are known to exist; this antibody will recognize only isoforms a and b. PRR5L antibody will not cross-react with PPR5.

Properties

Purification	PRR5L Antibody is affinity chromatography purified via peptide column.
Clonality	Polyclonal
Isotype	IgG
Physical State	Liquid
Buffer	PRR5L Antibody is supplied in PBS containing 0.02% sodium azide.
Concentration	1 mg/mL
Storage Conditions	PRR5L antibody can be stored at 4°C for three months and -20°C, stable for up to one year. As with all antibodies care should be taken to avoid repeated freeze thaw cycles. Antibodies should not be exposed to prolonged high temperatures.



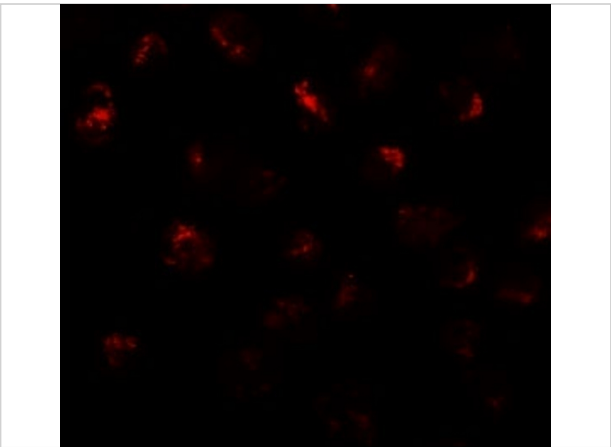
PPR5L Antibody 1

Western blot analysis of PPR5L in 3T3 cell lysate with PPR5L antibody at 1 µg/mL in (A) the absence and (B) the presence of blocking peptide



PPR5L Antibody 2

Immunocytochemistry of PPR5L in 293 cells with PPR5L antibody at 10 µg/mL.



PPR5L Antibody 3

Immunofluorescence of PPR5L in 3T3 cells with PPR5L antibody at 20 µg/mL.

Disclaimer

Disclaimer	Optimal dilutions/concentrations should be determined by the end user. The information provided is a guideline for product use. This product is for research use only.
------------	--

For research use only. For additional information, visit ProSci's [Terms and Conditions Page](#).