

## ATP2C1 Antibody

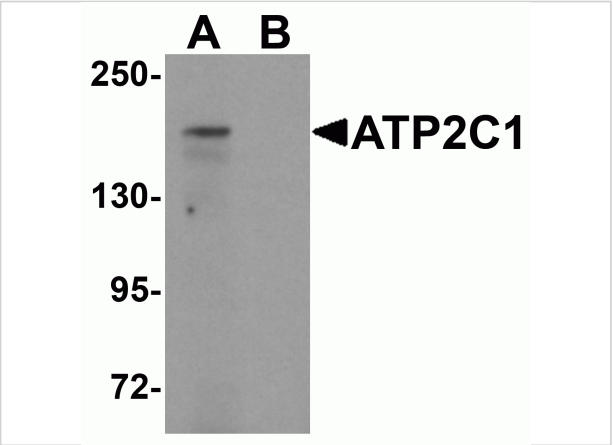
CATALOG NUMBER: 6287

### Specifications

Host Species	Rabbit
Species Reactivity	Human, Mouse
Homology	Predicted species reactivity based on immunogen sequence: Bovine: (94%), Rat: (86%)
Immunogen	ATP2C1 antibody was raised against a 19 amino acid synthetic peptide near the carboxy terminus of human ATP2C1. The immunogen is located within the last 50 amino acids of ATP2C1.
Conjugate	Unconjugated
Tested Applications	ELISA, IF, IHC-P, WB
User Note	Optimal dilutions for each application to be determined by the researcher.
Specificity	At least four isoforms of ATP2C1 are known to exist; this antibody will recognize only the three longest isoforms. ATP2C1 antibody will not cross-react with ATP2C2.

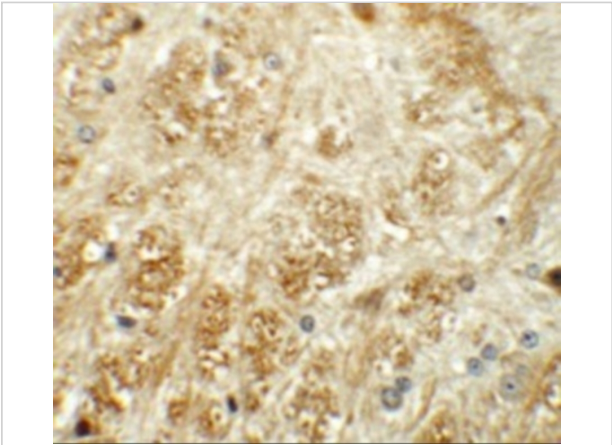
### Properties

Purification	ATP2C1 Antibody is affinity chromatography purified via peptide column.
Clonality	Polyclonal
Isotype	IgG
Physical State	Liquid
Buffer	ATP2C1 Antibody is supplied in PBS containing 0.02% sodium azide.
Concentration	1 mg/mL
Storage Conditions	ATP2C1 antibody can be stored at 4°C for three months and -20°C, stable for up to one year. As with all antibodies care should be taken to avoid repeated freeze thaw cycles. Antibodies should not be exposed to prolonged high temperatures.



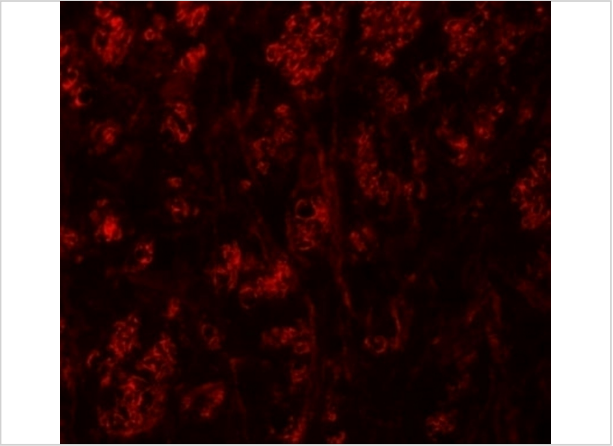
ATP2C1 Antibody 1

Western blot analysis of ATP2C1 in mouse brain tissue lysate with ATP2C1 antibody at 1 µg/mL in (A) the absence and (B) the presence of blocking peptide.



ATP2C1 Antibody 2

Immunohistochemistry of ATP2C1 in mouse brain tissue with ATP2C1 antibody at 5 µg/mL.



ATP2C1 Antibody 3

Immunofluorescence of ATP2C1 in mouse brain tissue with ATP2C1 antibody at 20 µg/mL.

Disclaimer

Disclaimer	Optimal dilutions/concentrations should be determined by the end user. The information provided is a guideline for product use. This product is for research use only.
------------	--

For research use only. For additional information, visit ProSci's [Terms and Conditions Page](#).