

EZH2 Antibody

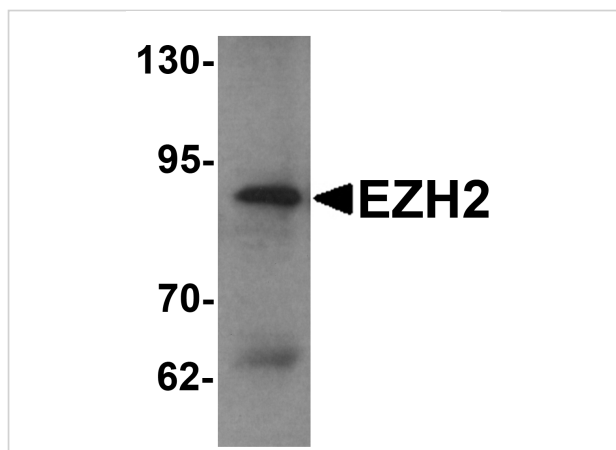
CATALOG NUMBER: 6263

Specifications

Host Species	Rabbit
Species Reactivity	Human, Mouse
Immunogen	EZH2 antibody was raised against a 17 amino acid synthetic peptide near the amino terminus of human EZH2. The immunogen is located within amino acids 190 - 240 of EZH2.
Conjugate	Unconjugated
Tested Applications	ELISA, ICC, IF, WB
User Note	Optimal dilutions for each application to be determined by the researcher.
Specificity	Multiple isoforms of EZH2 are known to exist. EZH2 antibody is predicted to not cross-react with EZH1.

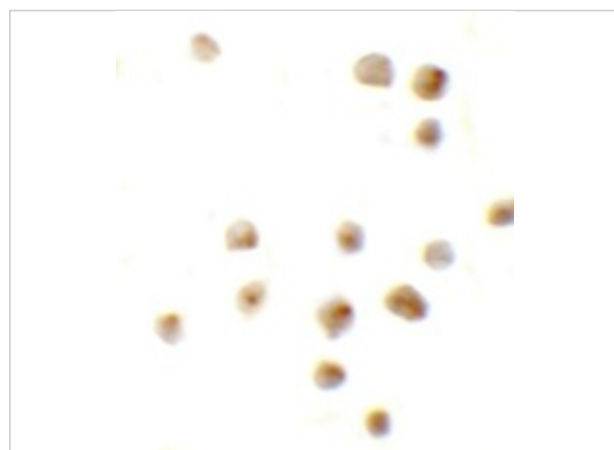
Properties

Purification	EZH2 Antibody is affinity chromatography purified via peptide column.
Clonality	Polyclonal
Isotype	IgG
Physical State	Liquid
Buffer	EZH2 Antibody is supplied in PBS containing 0.02% sodium azide.
Concentration	1 mg/mL
Storage Conditions	EZH2 antibody can be stored at 4°C for three months and -20°C, stable for up to one year. As with all antibodies care should be taken to avoid repeated freeze thaw cycles. Antibodies should not be exposed to prolonged high temperatures.



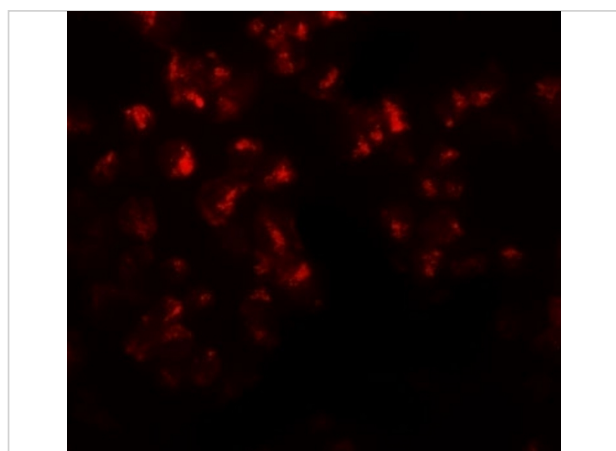
EZH2 Antibody 1

Western blot analysis of EZH2 in 293 cell lysate with EZH2 antibody at 1 µg/mL.



EZH2 Antibody 2

Immunocytochemistry of EZH2 in 293 cells with EZH2 antibody at 10 µg/mL.



EZH2 Antibody 3

Immunofluorescence of EZH2 in 293 cells with EZH2 antibody at 20 µg/mL.

Disclaimer

Disclaimer

Optimal dilutions/concentrations should be determined by the end user. The information provided is a guideline for product use. This product is for research use only.

For research use only. For additional information, visit ProSci's [Terms and Conditions Page](#).