

SLAMF4 Antibody

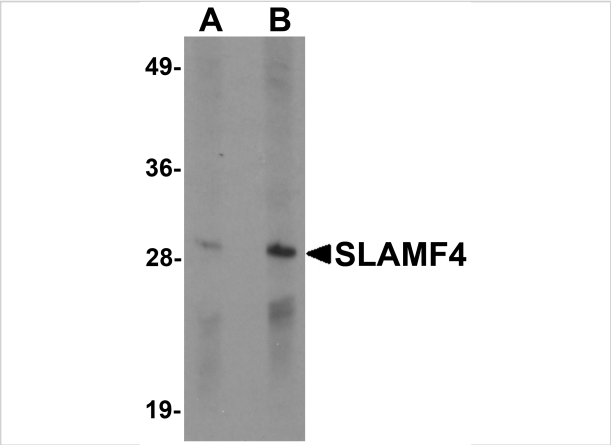
CATALOG NUMBER: 6253

Specifications

Host Species	Rabbit
Species Reactivity	Human, Mouse, Rat
Immunogen	SLAMF4 antibody was raised against a 16 amino acid synthetic peptide near the carboxy terminus of human SLAMF4. The immunogen is located within the last 50 amino acids of SLAMF4.
Conjugate	Unconjugated
Tested Applications	ELISA, IF, WB
User Note	Optimal dilutions for each application to be determined by the researcher.
Specificity	At least three isoforms of SLAMF4 are known to exist. SLAMF4 antibody is predicted to not cross-react with other SLAM protein family members.

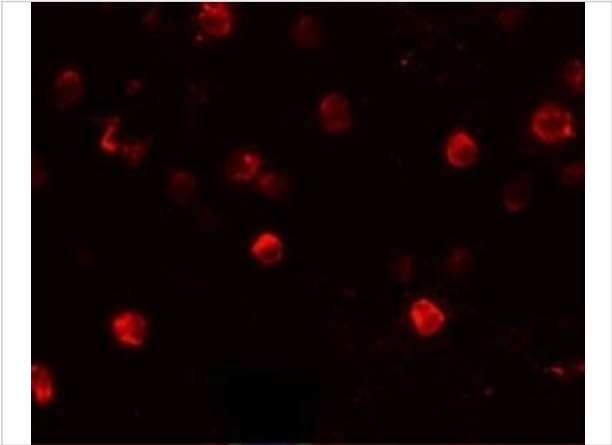
Properties

Purification	SLAMF4 Antibody is affinity chromatography purified via peptide column.
Clonality	Polyclonal
Isotype	IgG
Physical State	Liquid
Buffer	SLAMF4 Antibody is supplied in PBS containing 0.02% sodium azide.
Concentration	1 mg/mL
Storage Conditions	SLAMF4 antibody can be stored at 4°C for three months and -20°C, stable for up to one year. As with all antibodies care should be taken to avoid repeated freeze thaw cycles. Antibodies should not be exposed to prolonged high temperatures.



SLAMF4 Antibody 1

Western blot analysis of SLAMF4 in Daudi cell lysate with SLAMF4 antibody at (A) 1 and (B) 2 µg/mL.



SLAMF4 Antibody 2

Immunofluorescence of SLAMF4 in Daudi cells with SLAMF4 antibody at 20 µg/mL.

Disclaimer

Disclaimer	Optimal dilutions/concentrations should be determined by the end user. The information provided is a guideline for product use. This product is for research use only.
------------	--

For research use only. For additional information, visit ProSci's [Terms and Conditions Page](#).