

LIF Antibody

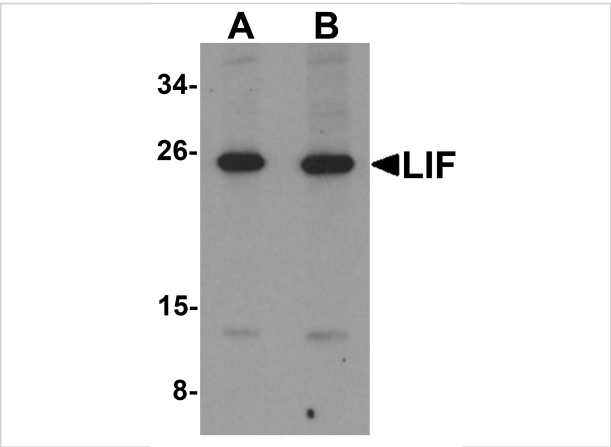
CATALOG NUMBER: 6245

Specifications

Host Species	Rabbit
Species Reactivity	Human, Mouse, Rat
Homology	Predicted species reactivity based on immunogen sequence: Bovine: (100%)
Immunogen	Anti-LIF antibody (6245) was raised against a peptide corresponding to 16 amino acids near the center of human LIF. The immunogen is located within amino acids 50-100 of LIF.
Conjugate	Unconjugated
Tested Applications	ELISA, IF, WB
User Note	Optimal dilutions for each application to be determined by the researcher.
Specificity	At least two isoforms of LIF are known to exist.
Predicted Molecular Weight	Predicted: 22kD Observed: 26kD (Post-modifications: N-linked Glycosylations)

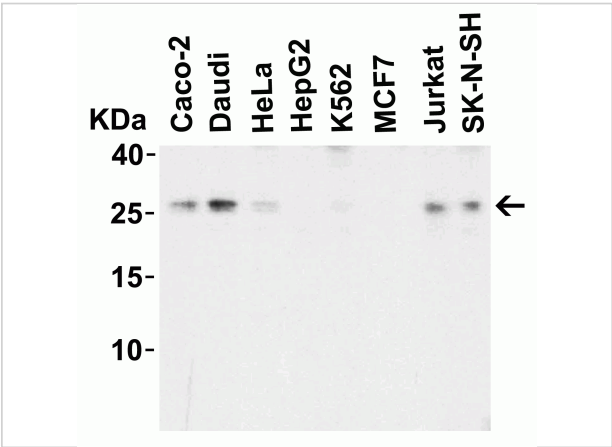
Properties

Purification	LIF Antibody is affinity chromatography purified via peptide column.
Clonality	Polyclonal
Isotype	IgG
Physical State	Liquid
Buffer	LIF Antibody is supplied in PBS containing 0.02% sodium azide.
Concentration	1 mg/mL
Storage Conditions	LIF antibody can be stored at 4°C for three months and -20°C, stable for up to one year. As with all antibodies care should be taken to avoid repeated freeze thaw cycles. Antibodies should not be exposed to prolonged high temperatures.



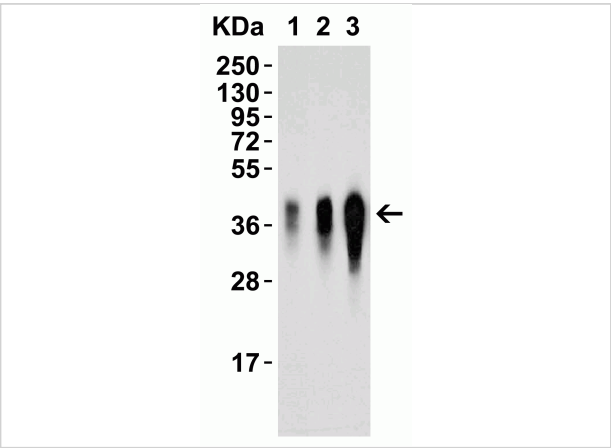
LIF Antibody 1

Figure 1 Western Blot Validation in Mouse 3T3 Cell Lysate
 Loading: 15 µg of lysates per lane. Antibodies: LIF 6245, (A: 1 µg/mL, B: 2 µg/mL), 1h incubation at RT in 5% NFDM/TBST....



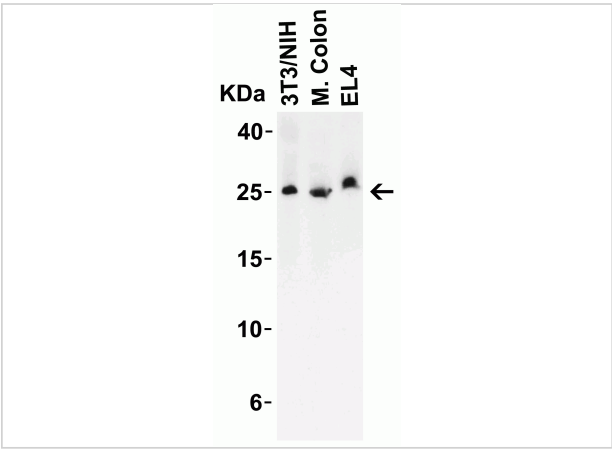
LIF Antibody 2

Figure 2 Western Blot Validation in Human Cell Lines
 Loading: 15 µg of lysates per lane. Antibodies: LIF 6245, (1 µg/mL), 1h incubation at RT in 5% NFDM/TBST. Secondary: Goat anti...



LIF Antibody 3

Figure 3 Western Blot Validation with Recombinant Protein
 Loading: 15 µg of lysates per lane. Antibodies: LIF 6245, (1: 1 µg/mL, 2: 2µg/mL, 3: 4 µg/mL), 1h incubation at RT in 5%...



LIF Antibody 4

Figure 4 Western Blot Validation in Mouse Cell Lines and Tissue
 Loading: 15 µg of lysates per lane. Antibodies: LIF 6245, (1 µg/mL), 1h incubation at RT in 5% NFDM/TBST. Secondary...

Disclaimer

Disclaimer

Optimal dilutions/concentrations should be determined by the end user. The information provided is a guideline for product use. This product is for research use only.