

## ZBTB4 Antibody

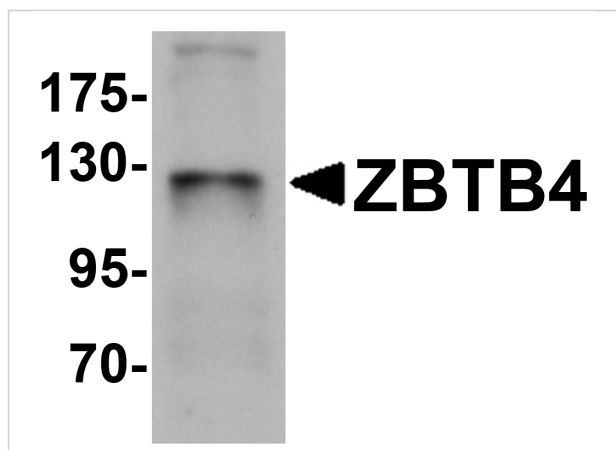
CATALOG NUMBER: 6121

### Specifications

Host Species	Rabbit
Species Reactivity	Human, Mouse
Homology	Predicted species reactivity based on immunogen sequence: Rat: (94%)
Immunogen	ZBTB4 antibody was raised against a 18 amino acid synthetic peptide near the carboxy terminus of human ZBTB4. The immunogen is located within amino acids 790 - 840 of ZBTB4.
Conjugate	Unconjugated
Tested Applications	ELISA, IF, IHC-P, WB
User Note	Optimal dilutions for each application to be determined by the researcher.
Specificity	At least four isoforms of ZBTB4 are known to exist; this antibody will only recognize the longest isoform. This antibody is predicted to not cross-react with other ZBTB protein family members.

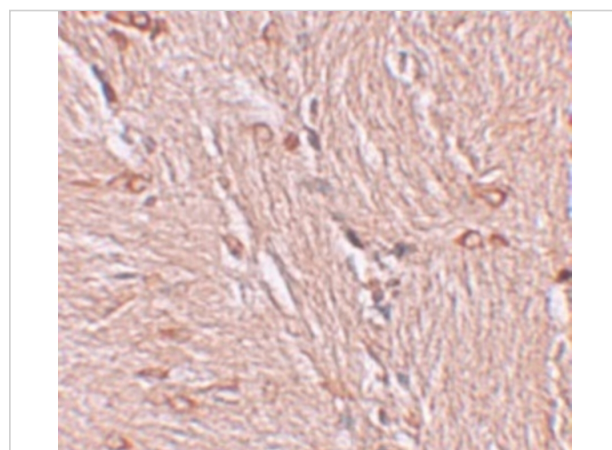
### Properties

Purification	ZBTB4 Antibody is affinity chromatography purified via peptide column.
Clonality	Polyclonal
Isotype	IgG
Physical State	Liquid
Buffer	ZBTB4 Antibody is supplied in PBS containing 0.02% sodium azide.
Concentration	1 mg/mL
Storage Conditions	ZBTB4 antibody can be stored at 4°C for three months and -20°C, stable for up to one year. As with all antibodies care should be taken to avoid repeated freeze thaw cycles. Antibodies should not be exposed to prolonged high temperatures.



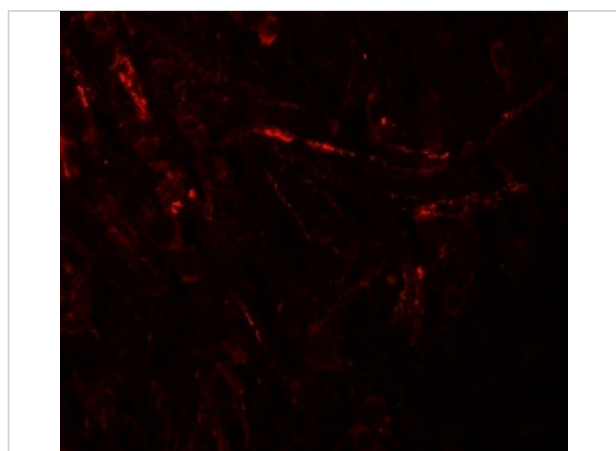
### ZBTB4 Antibody 1

Western blot analysis of ZBTB4 in SK-N-SH cell lysate with ZBTB4 antibody at 1 µg/mL.



### ZBTB4 Antibody 2

Immunohistochemistry of ZBTB4 in human brain tissue with ZBTB4 antibody at 2.5 µg/mL.



### ZBTB4 Antibody 3

Immunofluorescence of ZBTB4 in human brain tissue with ZBTB4 antibody at 20 µg/mL.

## Disclaimer

#### Disclaimer

Optimal dilutions/concentrations should be determined by the end user. The information provided is a guideline for product use. This product is for research use only.

For research use only. For additional information, visit ProSci's [Terms and Conditions Page](#).