

ZIP10 Antibody

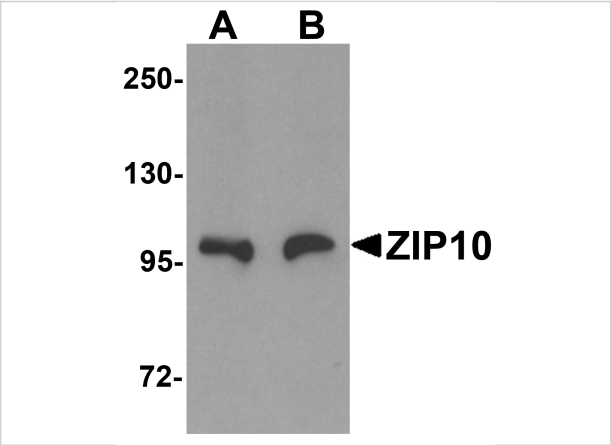
CATALOG NUMBER: 6099

Specifications

Host Species	Rabbit
Species Reactivity	Human, Mouse, Rat
Immunogen	ZIP10 antibody was raised against an 18 amino acid synthetic peptide near the center of human ZIP10. The immunogen is located within amino acids 550 - 600 of ZIP10.
Conjugate	Unconjugated
Tested Applications	ELISA, IF, IHC-P, WB
User Note	Optimal dilutions for each application to be determined by the researcher.

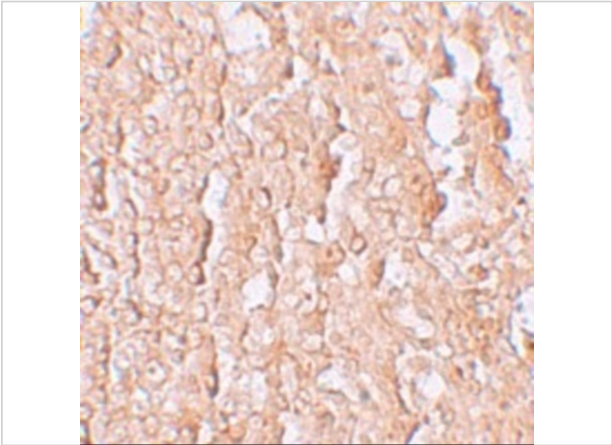
Properties

Purification	ZIP10 Antibody is affinity chromatography purified via peptide column.
Clonality	Polyclonal
Isotype	IgG
Physical State	Liquid
Buffer	ZIP10 Antibody is supplied in PBS containing 0.02% sodium azide.
Concentration	1 mg/mL
Storage Conditions	ZIP10 antibody can be stored at 4°C for three months and -20°C, stable for up to one year. As with all antibodies care should be taken to avoid repeated freeze thaw cycles. Antibodies should not be exposed to prolonged high temperatures.



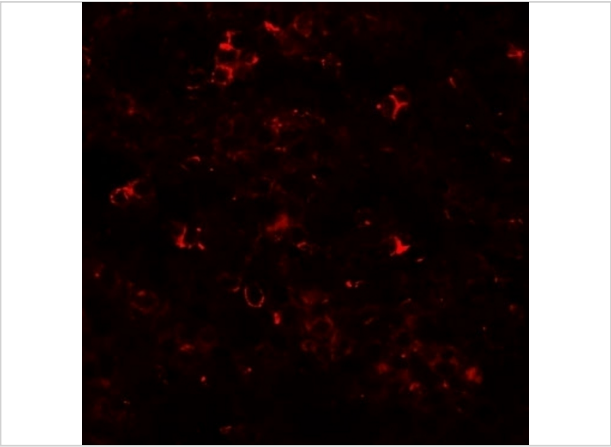
ZIP10 Antibody 1

Western blot analysis of ZIP10 in human spleen tissue lysate with ZIP10 antibody at (A) 1 and (B) 2 µg/mL.



ZIP10 Antibody 2

Immunohistochemistry of ZIP10 in human spleen tissue with ZIP10 antibody at 2.5 µg/mL.



ZIP10 Antibody 3

Immunofluorescence of ZIP10 in human spleen tissue with ZIP10 antibody at 20 µg/mL.

Disclaimer

Disclaimer	Optimal dilutions/concentrations should be determined by the end user. The information provided is a guideline for product use. This product is for research use only.
------------	--

For research use only. For additional information, visit ProSci's [Terms and Conditions Page](#).