

PIWI-L1 Antibody

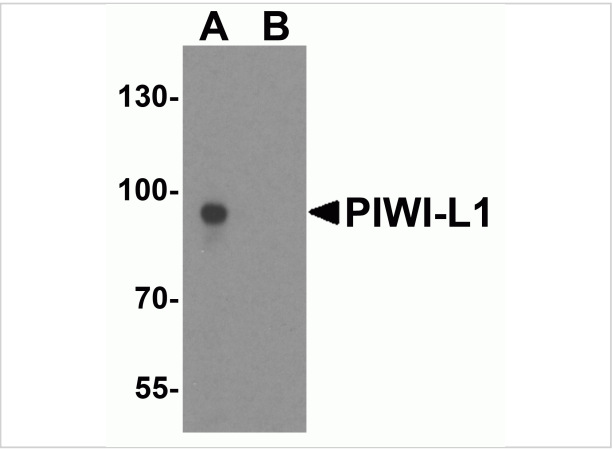
CATALOG NUMBER: 6029

Specifications

Host Species	Rabbit
Species Reactivity	Human, Mouse, Rat
Homology	Predicted species reactivity based on immunogen sequence: Chicken: (94%)
Immunogen	PIWI-L1 antibody was raised against an 18 amino acid synthetic peptide near the amino terminus of human PIWI-L1. The immunogen is located within amino acids 60 - 110 of PIWI-L1.
Conjugate	Unconjugated
Tested Applications	ELISA, IF, IHC-P, WB
User Note	Optimal dilutions for each application to be determined by the researcher.
Predicted Molecular Weight	Predicted: 85, 90 kDa Observed: 95 kDa

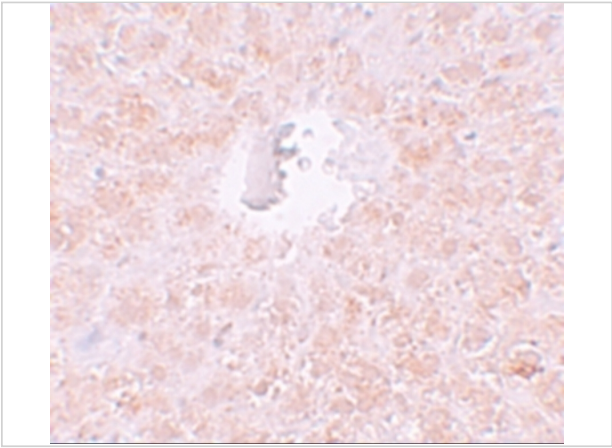
Properties

Purification	PIWI-L1 Antibody is affinity chromatography purified via peptide column.
Clonality	Polyclonal
Isotype	IgG
Physical State	Liquid
Buffer	PIWI-L1 Antibody is supplied in PBS containing 0.02% sodium azide.
Concentration	1 mg/mL
Storage Conditions	PIWI-L1 antibody can be stored at 4°C for three months and -20°C, stable for up to one year. As with all antibodies care should be taken to avoid repeated freeze thaw cycles. Antibodies should not be exposed to prolonged high temperatures.



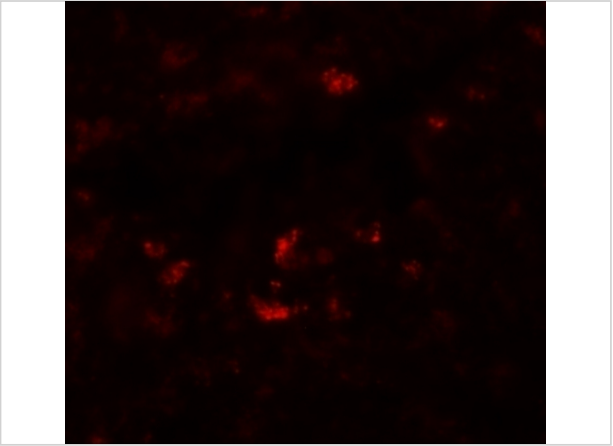
PIWI-L1 Antibody 1

Western blot analysis of PIWI-L1 in human testis tissue lysate with PIWI-L2 antibody at 1 µg/ml in (A) the absence and (B) the presence of blocking peptide.



PIWI-L1 Antibody 2

Immunohistochemistry of PIWI-L1 in rat liver tissue with PIWI-L1 antibody at 10 µg/mL.



PIWI-L1 Antibody 3

Immunofluorescence of PIWI-L1 in rat liver tissue with PIWI-L1 antibody at 20 µg/mL.

Disclaimer

Disclaimer	Optimal dilutions/concentrations should be determined by the end user. The information provided is a guideline for product use. This product is for research use only.
------------	--

For research use only. For additional information, visit ProSci's [Terms and Conditions Page](#).