



ProSci Incorporated
12170 Flint Place
Poway, CA 92064, USA
prosci-inc.com

P: +1 (888) 513-9525
Local: +1 (858) 513-2638
Fax: +1 (858) 513-2692

customercare@prosci-inc.com
techsupport@prosci-inc.com

ATG9A Antibody

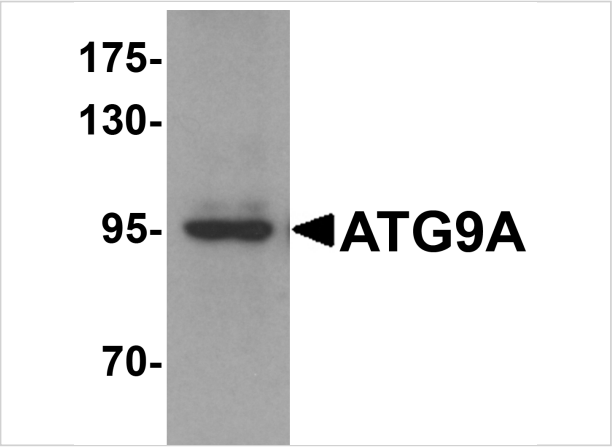
CATALOG NUMBER: 6013

Specifications

Host Species	Rabbit
Species Reactivity	Human, Mouse, Rat
Homology	Predicted species reactivity based on immunogen sequence: Bovine: (94%)
Immunogen	ATG9A antibody was raised against an 18 amino acid synthetic peptide near the carboxy terminus of human ATG9A. The immunogen is located within amino acids 720 - 770 of ATG9A.
Conjugate	Unconjugated
Tested Applications	ELISA, IF, IHC-P, WB
User Note	Optimal dilutions for each application to be determined by the researcher.

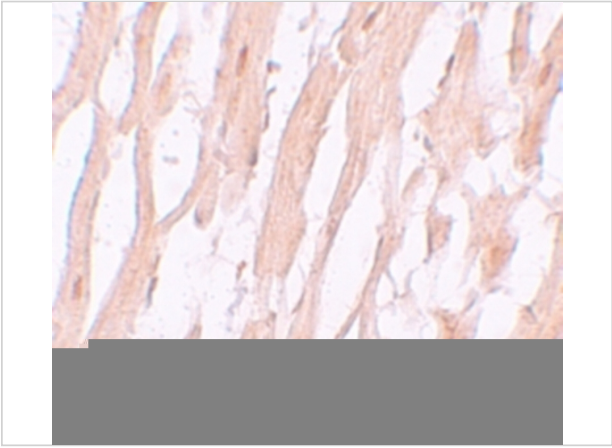
Properties

Purification	ATG9A Antibody is affinity chromatography purified via peptide column.
Clonality	Polyclonal
Isotype	IgG
Physical State	Liquid
Buffer	ATG9A Antibody is supplied in PBS containing 0.02% sodium azide.
Concentration	1 mg/mL
Storage Conditions	ATG9A antibody can be stored at 4°C for three months and -20°C, stable for up to one year. As with all antibodies care should be taken to avoid repeated freeze thaw cycles. Antibodies should not be exposed to prolonged high temperatures.



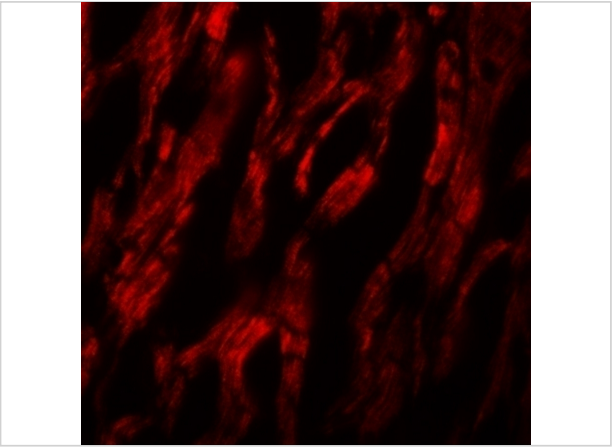
ATG9A Antibody 1

Western blot analysis of ATG9A in mouse heart tissue lysate with ATG9A antibody at 1 µg/mL.



ATG9A Antibody 2

Immunohistochemistry of ATG9A in human heart tissue with ATG9A antibody at 5 µg/mL.



ATG9A Antibody 3

Immunofluorescence of ATG9A in human heart tissue with ATG9A antibody at 20 µg/mL.

Disclaimer

Disclaimer	Optimal dilutions/concentrations should be determined by the end user. The information provided is a guideline for product use. This product is for research use only.
-------------------	--

For research use only. For additional information, visit ProSci's [Terms and Conditions Page](#).