

NALP10 Antibody

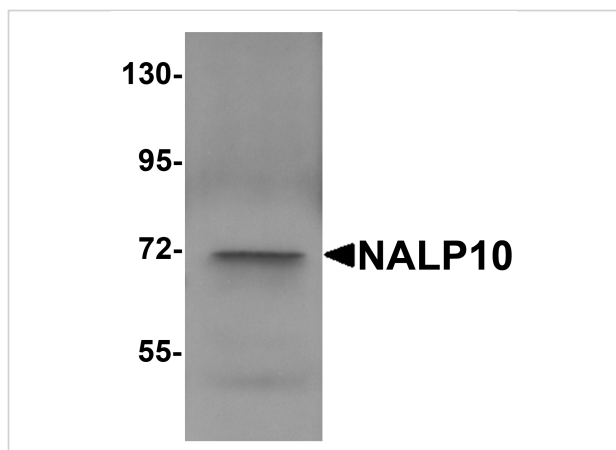
CATALOG NUMBER: 5967

Specifications

Host Species	Rabbit
Species Reactivity	Human
Homology	Predicted species reactivity based on immunogen sequence: Mouse: (83%)
Immunogen	NALP10 antibody was raised against a 14 amino acid synthetic peptide near the amino terminus of human NALP10. The immunogen is located within the first 50 amino acids of NALP10.
Conjugate	Unconjugated
Tested Applications	ELISA, IF, IHC-P, WB
User Note	Optimal dilutions for each application to be determined by the researcher.

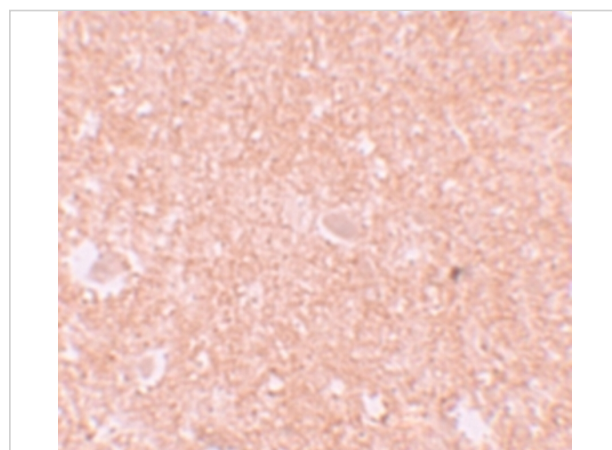
Properties

Purification	NALP10 Antibody is affinity chromatography purified via peptide column.
Clonality	Polyclonal
Isotype	IgG
Physical State	Liquid
Buffer	NALP10 Antibody is supplied in PBS containing 0.02% sodium azide.
Concentration	1 mg/mL
Storage Conditions	NALP10 antibody can be stored at 4°C for three months and -20°C, stable for up to one year. As with all antibodies care should be taken to avoid repeated freeze thaw cycles. Antibodies should not be exposed to prolonged high temperatures.



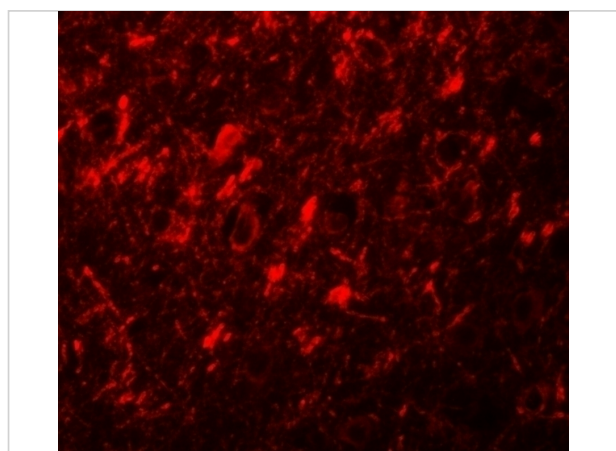
NALP10 Antibody 1

Western blot analysis of NALP10 in human brain tissue lysate with NALP10 antibody at 1 µg/mL.



NALP10 Antibody 2

Immunohistochemistry of NALP10 in human brain tissue with NALP10 antibody at 10 µg/mL.



NALP10 Antibody 3

Immunofluorescence of NALP10 in human brain tissue with NALP10 antibody at 20 µg/mL.

Disclaimer

Disclaimer

Optimal dilutions/concentrations should be determined by the end user. The information provided is a guideline for product use. This product is for research use only.

For research use only. For additional information, visit ProSci's [Terms and Conditions Page](#).