

HVCN1 Antibody

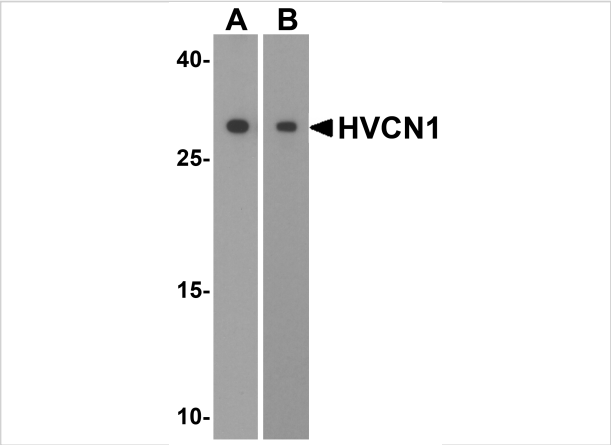
CATALOG NUMBER: 5875

Specifications

Host Species	Rabbit
Species Reactivity	Human, Mouse, Rat
Homology	Predicted species reactivity based on immunogen sequence: Chicken: (71%)
Immunogen	HVCN1 antibody was raised against a 17 amino acid synthetic peptide near the carboxy terminus of human HVCN1. The immunogen is located within the last 50 amino acids of HVCN1.
Conjugate	Unconjugated
Tested Applications	ELISA, IF, IHC-P, WB
User Note	Optimal dilutions for each application to be determined by the researcher.
Predicted Molecular Weight	Predicted: 30 kDa Observed: 30 kDa

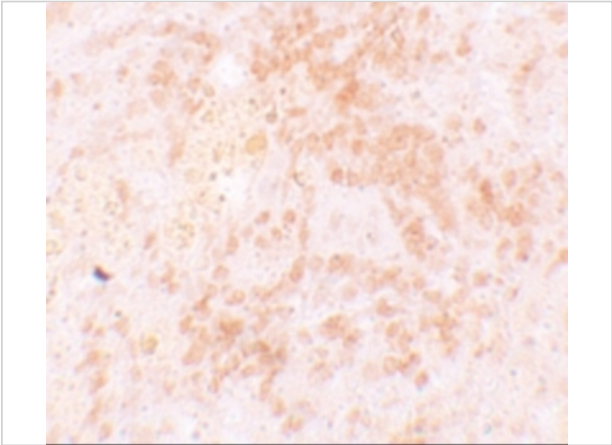
Properties

Purification	HVCN1 Antibody is affinity chromatography purified via peptide column.
Clonality	Polyclonal
Isotype	IgG
Physical State	Liquid
Buffer	HVCN1 Antibody is supplied in PBS containing 0.02% sodium azide.
Concentration	1 mg/mL
Storage Conditions	HVCN1 antibody can be stored at 4°C for three months and -20°C, stable for up to one year. As with all antibodies care should be taken to avoid repeated freeze thaw cycles. Antibodies should not be exposed to prolonged high temperatures.



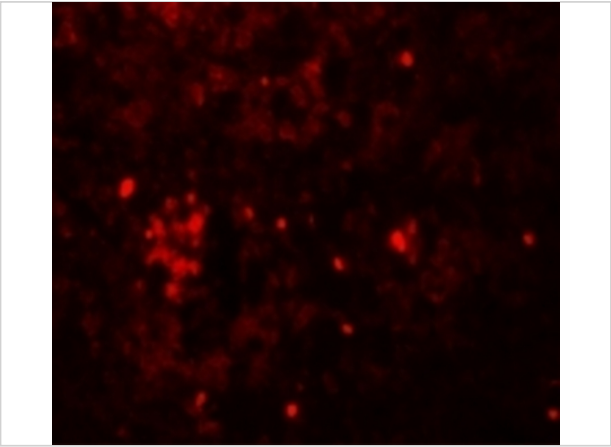
HVCN1 Antibody 1

Western blot analysis of HVCN1 in (A) human spleen and (B) mouse spleen tissue lysates with HVCN1 antibody at 1 µg/mL.



HVCN1 Antibody 2

Immunohistochemistry of HVCN1 in rat spleen tissue with HVCN1 antibody at 5 µg/mL.



HVCN1 Antibody 3

Immunofluorescence of HVCN1 in Rat Spleen cells with HVCN1 antibody at 20 µg/mL.

Disclaimer

Disclaimer	Optimal dilutions/concentrations should be determined by the end user. The information provided is a guideline for product use. This product is for research use only.
------------	--

For research use only. For additional information, visit ProSci's [Terms and Conditions Page](#).