

CALHM1 Antibody

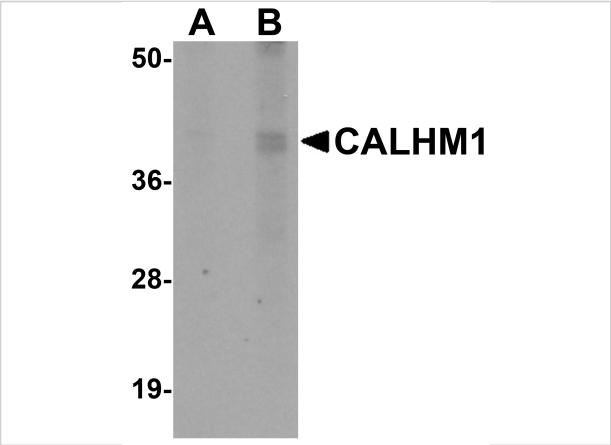
CATALOG NUMBER: 5593

Specifications

Host Species	Rabbit
Species Reactivity	Human, Mouse, Rat
Immunogen	CALHM1 antibody was raised against a 17 amino acid synthetic peptide near the amino terminus of human CALHM1. The immunogen is located within amino acids 60 - 110 of CALHM1.
Conjugate	Unconjugated
Tested Applications	ELISA, IF, IHC-P, WB
User Note	Optimal dilutions for each application to be determined by the researcher.

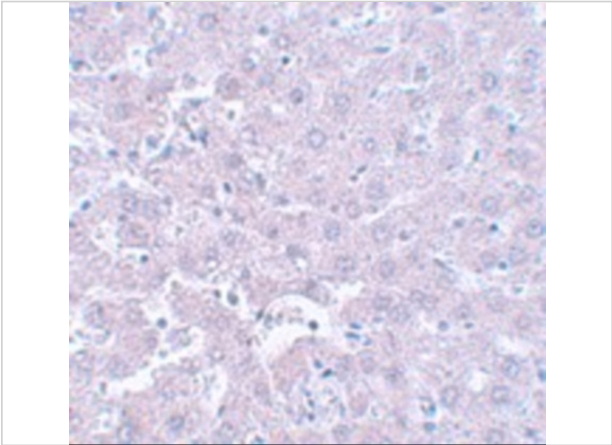
Properties

Purification	CALHM1 Antibody is affinity chromatography purified via peptide column.
Clonality	Polyclonal
Isotype	IgG
Physical State	Liquid
Buffer	CALHM1 Antibody is supplied in PBS containing 0.02% sodium azide.
Concentration	1 mg/mL
Storage Conditions	CALHM1 antibody can be stored at 4°C for three months and -20°C, stable for up to one year. As with all antibodies care should be taken to avoid repeated freeze thaw cycles. Antibodies should not be exposed to prolonged high temperatures.



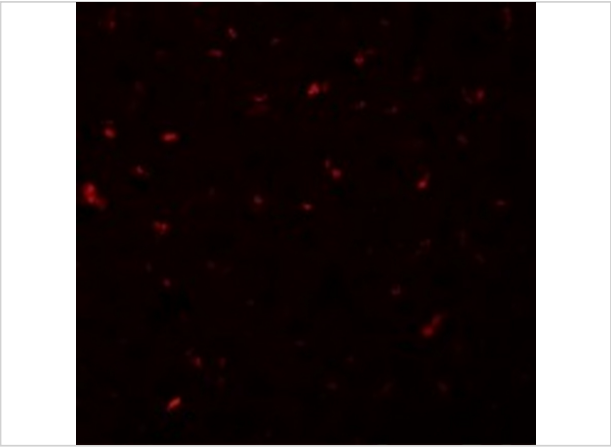
CALHM1 Antibody 1

Western blot analysis of CALHM1 in rat liver tissue lysate with CALHM1 antibody at (A) 1 and (B) 2 µg/mL.



CALHM1 Antibody 2

Immunohistochemistry of CALHM1 in rat liver tissue with CALHM1 antibody at 5 µg/mL.



CALHM1 Antibody 3

Immunofluorescence of CALHM1 in Rat Liver cells with CALHM1 antibody at 20 µg/mL.

Disclaimer

Disclaimer	Optimal dilutions/concentrations should be determined by the end user. The information provided is a guideline for product use. This product is for research use only.
------------	--

For research use only. For additional information, visit ProSci's [Terms and Conditions Page](#).