

FRMPD1 Antibody

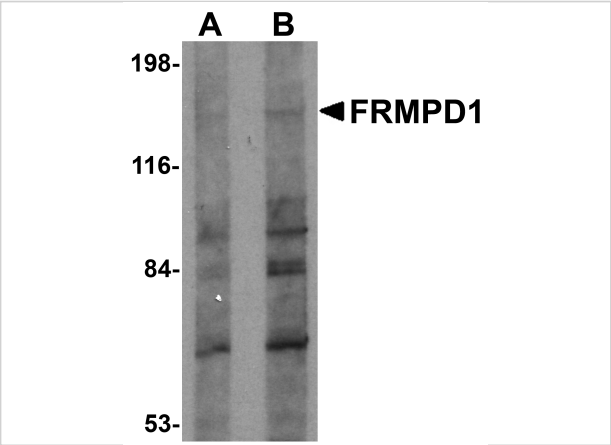
CATALOG NUMBER: 5453

Specifications

Host Species	Rabbit
Species Reactivity	Human
Homology	Predicted species reactivity based on immunogen sequence: Mouse: (93%)
Immunogen	FRMPD1 antibody was raised against a 15 amino acid synthetic peptide from near the carboxy terminus of human FRMPD1. The immunogen is located within amino acids 1330 - 1380 of FRMPD1.
Conjugate	Unconjugated
Tested Applications	ELISA, IF, WB
User Note	Optimal dilutions for each application to be determined by the researcher.

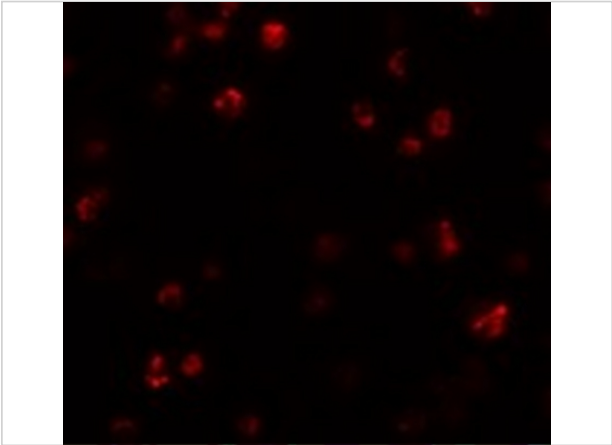
Properties

Purification	FRMPD1 Antibody is affinity chromatography purified via peptide column.
Clonality	Polyclonal
Isotype	IgG
Physical State	Liquid
Buffer	FRMPD1 Antibody is supplied in PBS containing 0.02% sodium azide.
Concentration	1 mg/mL
Storage Conditions	FRMPD1 antibody can be stored at 4°C for three months and -20°C, stable for up to one year. As with all antibodies care should be taken to avoid repeated freeze thaw cycles. Antibodies should not be exposed to prolonged high temperatures.



FRMPD1 Antibody 1

Western blot analysis of FRMPD1 in K562 cell lysate with FRMPD1 antibody at (A) 1 and (B) 2 µg/mL.



FRMPD1 Antibody 2

Immunofluorescence of FRMPD1 in K562 cells with FRMPD1 antibody at 20 µg/mL.

Disclaimer

Disclaimer	Optimal dilutions/concentrations should be determined by the end user. The information provided is a guideline for product use. This product is for research use only.
------------	--

For research use only. For additional information, visit ProSci's [Terms and Conditions Page](#).