

## RUSC2 Antibody

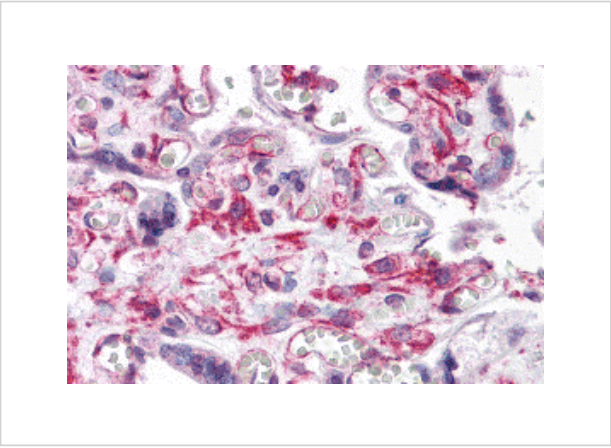
CATALOG NUMBER: 5413

### Specifications

Host Species	Rabbit
Species Reactivity	Human
Homology	Predicted species reactivity based on immunogen sequence: Mouse: (79%)
Immunogen	RUSC2 antibody was raised against a 15 amino acid synthetic peptide from near the carboxy terminus of human RUSC2. The immunogen is located within amino acids 1410 - 1460 of RUSC2.
Conjugate	Unconjugated
Tested Applications	ELISA, IHC-P
User Note	Optimal dilutions for each application to be determined by the researcher.
Specificity	At least three isoforms are known to exist; this antibody will only detect the longest isoform. This antibody is predicted to not cross-react with RUSC1.

### Properties

Purification	RUSC2 Antibody is affinity chromatography purified via peptide column.
Clonality	Polyclonal
Isotype	IgG
Physical State	Liquid
Buffer	RUSC2 Antibody is supplied in PBS containing 0.02% sodium azide.
Concentration	1 mg/mL
Storage Conditions	RUSC2 antibody can be stored at 4°C for three months and -20°C, stable for up to one year. As with all antibodies care should be taken to avoid repeated freeze thaw cycles. Antibodies should not be exposed to prolonged high temperatures.



### RUSC2 Antibody 1

Immunohistochemistry of RUSC2 in human placenta tissue with RUSC2 antibody at 5 µg/mL.

### Disclaimer

Disclaimer	Optimal dilutions/concentrations should be determined by the end user. The information provided is a guideline for product use. This product is for research use only.
------------	--

For research use only. For additional information, visit ProSci's [Terms and Conditions Page](#).