

JMJD7 Antibody

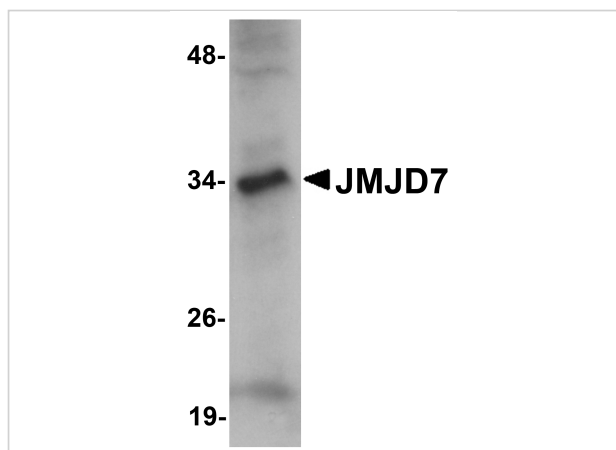
CATALOG NUMBER: 5385

Specifications

Host Species	Rabbit
Species Reactivity	Human, Mouse, Rat
Immunogen	JMJD7 antibody was raised against an 18 amino acid synthetic peptide from near the carboxy terminus of human JMJD7. The immunogen is located within amino acids 230 - 280 of JMJD7.
Conjugate	Unconjugated
Tested Applications	ELISA, IF, IHC-P, WB
User Note	Optimal dilutions for each application to be determined by the researcher.

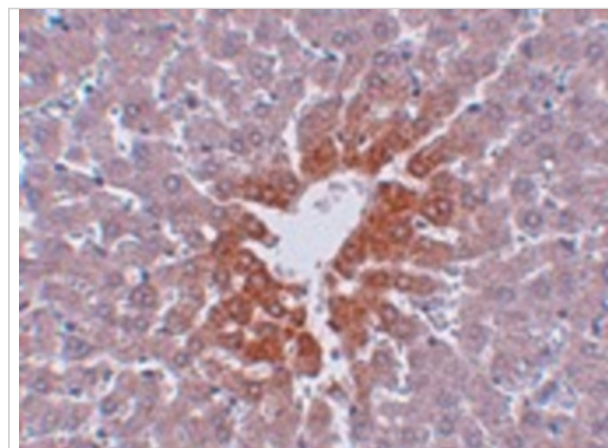
Properties

Purification	JMJD7 Antibody is affinity chromatography purified via peptide column.
Clonality	Polyclonal
Isotype	IgG
Physical State	Liquid
Buffer	JMJD7 Antibody is supplied in PBS containing 0.02% sodium azide.
Concentration	1 mg/mL
Storage Conditions	JMJD7 antibody can be stored at 4°C for three months and -20°C, stable for up to one year. As with all antibodies care should be taken to avoid repeated freeze thaw cycles. Antibodies should not be exposed to prolonged high temperatures.



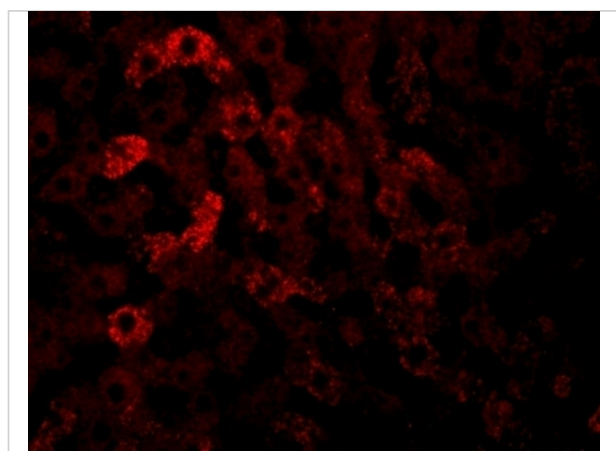
JMJD7 Antibody 1

Western blot analysis of JMJD7 in 3T3 cell lysate with JMJD7 antibody at 1 µg/mL.



JMJD7 Antibody 2

Immunohistochemistry of JMJD7 in rat liver tissue with JMJD7 antibody at 2.5 µg/mL.



JMJD7 Antibody 3

Immunofluorescence of JMJD7 in rat liver tissue with JMJD7 antibody at 20 µg/mL.

Disclaimer

Disclaimer

Optimal dilutions/concentrations should be determined by the end user. The information provided is a guideline for product use. This product is for research use only.

For research use only. For additional information, visit ProSci's [Terms and Conditions Page](#).