

IRGC Antibody

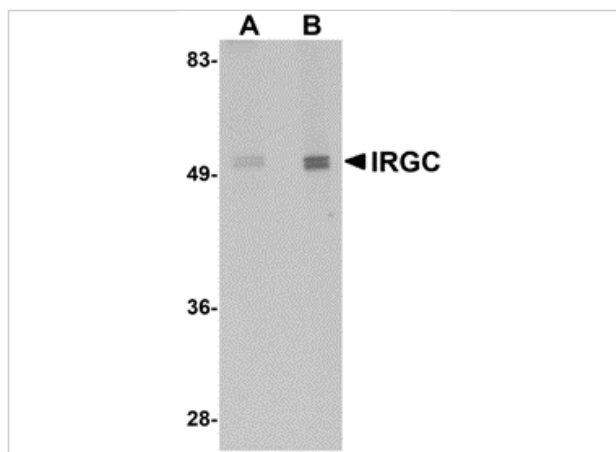
CATALOG NUMBER: 5295

Specifications

Host Species	Rabbit
Species Reactivity	Human, Mouse, Rat
Immunogen	IRGC antibody was raised against a 12 amino acid synthetic peptide near the carboxy terminus of human IRGC. The immunogen is located within the last 50 amino acids of IRGC.
Conjugate	Unconjugated
Tested Applications	ELISA, ICC, IF, WB
User Note	Optimal dilutions for each application to be determined by the researcher.
Specificity	Two isoforms of IRGC are known to exist; this antibody will recognize both isoforms.

Properties

Purification	IRGC Antibody is affinity chromatography purified via peptide column.
Clonality	Polyclonal
Isotype	IgG
Physical State	Liquid
Buffer	IRGC Antibody is supplied in PBS containing 0.02% sodium azide.
Concentration	1 mg/mL
Storage Conditions	IRGC antibody can be stored at 4°C for three months and -20°C, stable for up to one year. As with all antibodies care should be taken to avoid repeated freeze thaw cycles. Antibodies should not be exposed to prolonged high temperatures.



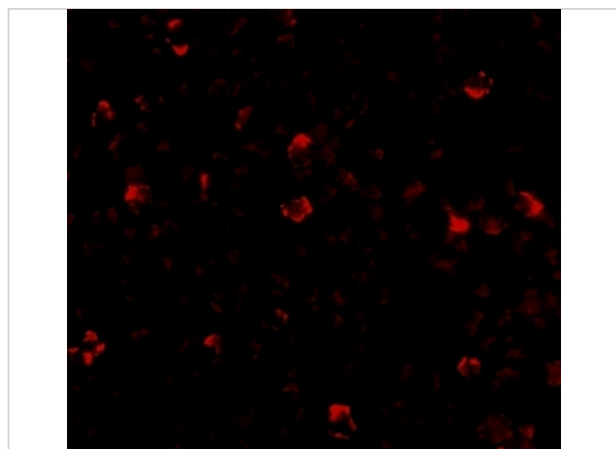
IRGC Antibody 1

Western blot analysis of IRGC in mouse brain tissue lysate with IRGC antibody at (A) 1 and (B) 2 µg/mL.



IRGC Antibody 2

Immunocytochemistry of IRGC in A20 cells with IRGC antibody at 2.5 µg/mL.



IRGC Antibody 3

Immunofluorescence of IRGCb in A20 cells with IRGCb antibody at 20 µg/mL.

Disclaimer

Disclaimer

Optimal dilutions/concentrations should be determined by the end user. The information provided is a guideline for product use. This product is for research use only.

For research use only. For additional information, visit ProSci's [Terms and Conditions Page](#).