

## LRFN1 Antibody

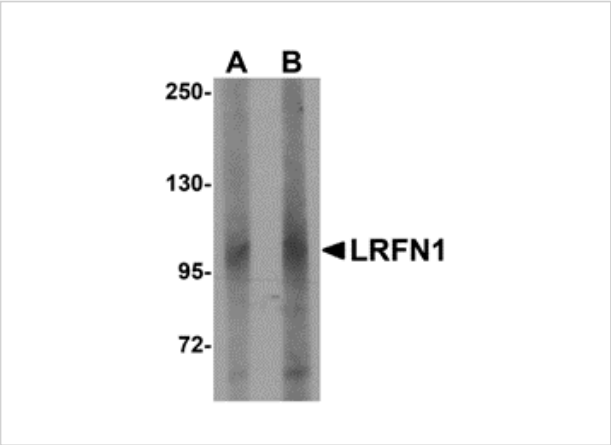
CATALOG NUMBER: 5065

### Specifications

Host Species	Rabbit
Species Reactivity	Human, Mouse, Rat
Immunogen	LRFN1 antibody was raised against an 18 amino acid synthetic peptide near the carboxy terminus of human LRFN1. The immunogen is located within amino acids 700 - 750 of LRFN1.
Conjugate	Unconjugated
Tested Applications	ELISA, IF, IHC-P, WB
User Note	Optimal dilutions for each application to be determined by the researcher.
Specificity	This antibody is predicted to not cross-react with other members of the LRFN family.

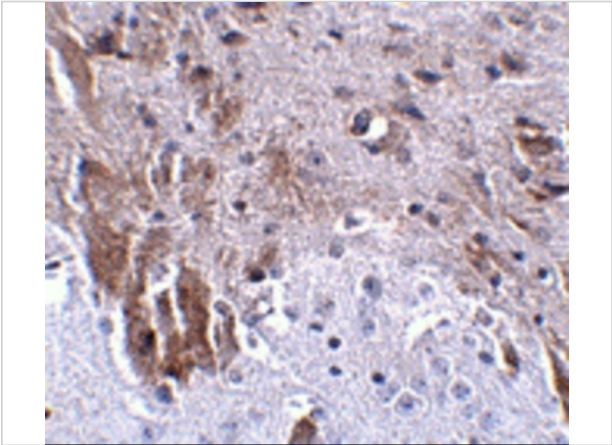
### Properties

Purification	LRFN1 Antibody is affinity chromatography purified via peptide column.
Clonality	Polyclonal
Isotype	IgG
Physical State	Liquid
Buffer	LRFN1 Antibody is supplied in PBS containing 0.02% sodium azide.
Concentration	1 mg/mL
Storage Conditions	LRFN1 antibody can be stored at 4°C for three months and -20°C, stable for up to one year. As with all antibodies care should be taken to avoid repeated freeze thaw cycles. Antibodies should not be exposed to prolonged high temperatures.



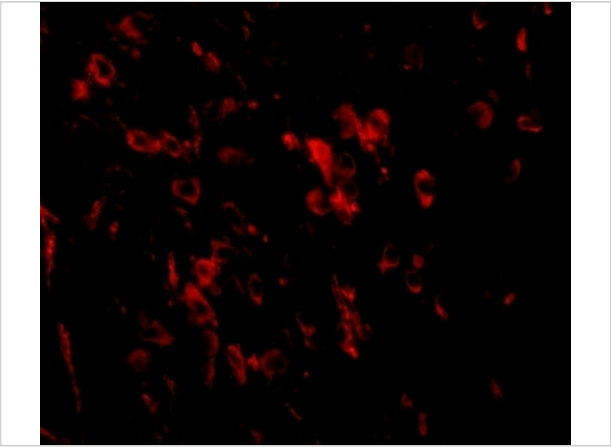
### LRFN1 Antibody 1

Western blot analysis of LRFN1 in human brain lysate with LRFN1 antibody at (A) 1 and (B) 2  $\mu\text{g/mL}$ .



### LRFN1 Antibody 2

Immunohistochemistry of LRFN1 in mouse brain tissue with LRFN1 antibody at 2.5  $\mu\text{g/mL}$ .



### LRFN1 Antibody 3

Immunofluorescence of LRFN1 in mouse brain tissue with LRFN1 antibody at 20  $\mu\text{g/mL}$ .

## Disclaimer

Disclaimer	Optimal dilutions/concentrations should be determined by the end user. The information provided is a guideline for product use. This product is for research use only.
------------	--

For research use only. For additional information, visit ProSci's [Terms and Conditions Page](#).