

KLRA1 Antibody

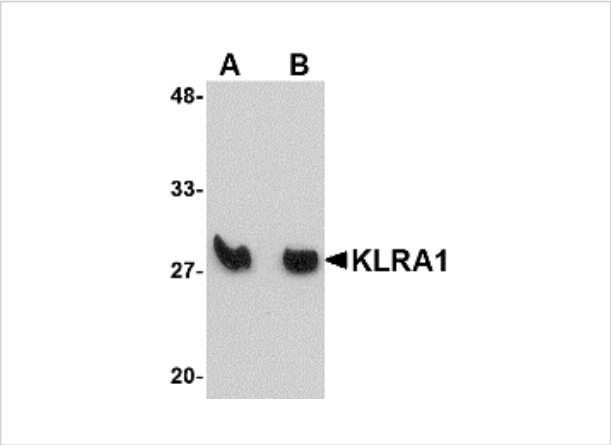
CATALOG NUMBER: 4999

Specifications

Host Species	Rabbit
Species Reactivity	Human, Mouse, Rat
Immunogen	KLRA1 antibody was raised against a 13 amino acid synthetic peptide near the center of human KLRA1. The immunogen is located within amino acids 140 - 190 of KLRA1.
Conjugate	Unconjugated
Tested Applications	ELISA, ICC, IF, WB
User Note	Optimal dilutions for each application to be determined by the researcher.
Specificity	At least three isoforms of KLRA1 are known to exist; this antibody recognizes only the long isoform.

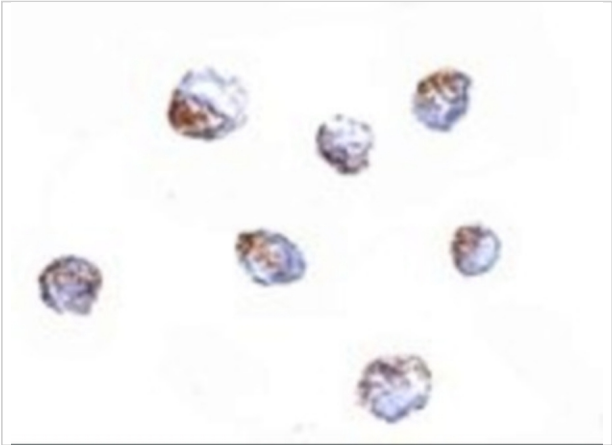
Properties

Purification	KLRA1 Antibody is affinity chromatography purified via peptide column.
Clonality	Polyclonal
Isotype	IgG
Physical State	Liquid
Buffer	KLRA1 Antibody is supplied in PBS containing 0.02% sodium azide.
Concentration	1 mg/mL
Storage Conditions	KLRA1 antibody can be stored at 4°C for three months and -20°C, stable for up to one year. As with all antibodies care should be taken to avoid repeated freeze thaw cycles. Antibodies should not be exposed to prolonged high temperatures.



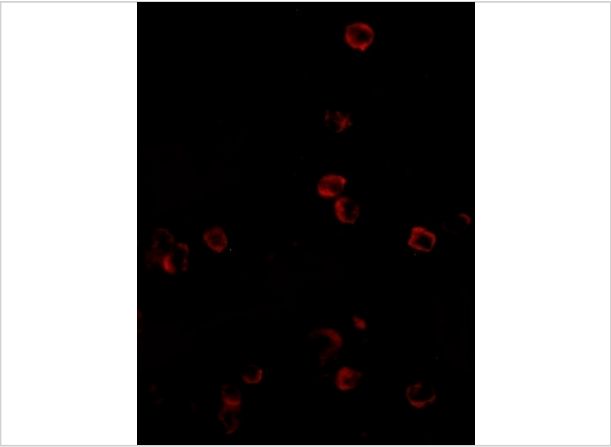
KLRA1 Antibody 1

Western blot analysis of KLRA1 in mouse spleen tissue lysate with KLRA1 antibody at (A) 1 $\mu\text{g/mL}$ and (B) 2 $\mu\text{g/mL}$.



KLRA1 Antibody 2

Immunocytochemistry of KLRA1 in 293 cells with KLRA1 antibody at 4 $\mu\text{g/mL}$.



KLRA1 Antibody 3

Immunofluorescence of KLRA1 in 293 cells with KLRA1 antibody at 20 $\mu\text{g/mL}$.

Disclaimer

Disclaimer	Optimal dilutions/concentrations should be determined by the end user. The information provided is a guideline for product use. This product is for research use only.
------------	--

For research use only. For additional information, visit ProSci's [Terms and Conditions Page](#).