

DFF45 Antibody

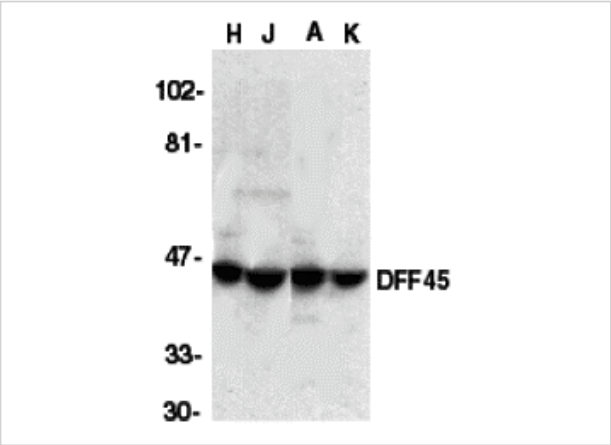
CATALOG NUMBER: 1141

Specifications

Host Species	Rabbit
Species Reactivity	Human
Immunogen	DFF45 antibody was raised against a 19 amino acid peptide near the carboxy terminus of human DFF45. The immunogen is located within the last 50 amino acids of DFF45.
Conjugate	Unconjugated
Tested Applications	ELISA, ICC, IF, WB
User Note	Optimal dilutions for each application to be determined by the researcher.
Predicted Molecular Weight	45 kDa

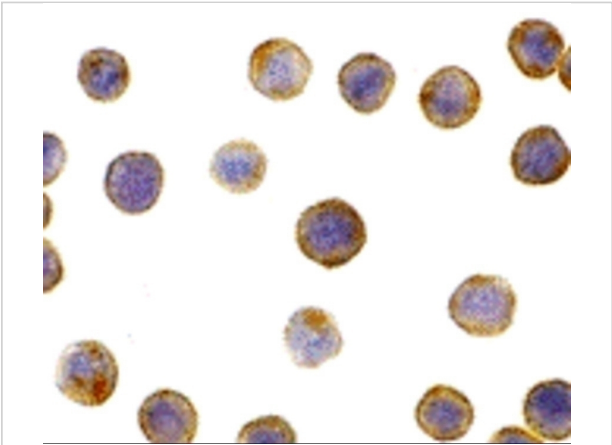
Properties

Purification	DFF45 Antibody is Antibody is DEAE purified.
Clonality	Polyclonal
Isotype	IgG
Physical State	Liquid
Buffer	DFF45 Antibody is supplied in PBS containing 0.02% sodium azide.
Concentration	1 mg/ml
Storage Conditions	DFF45 antibody can be stored at 4°C for three months and -20°C, stable for up to one year. As with all antibodies care should be taken to avoid repeated freeze thaw cycles. Antibodies should not be exposed to prolonged high temperatures.



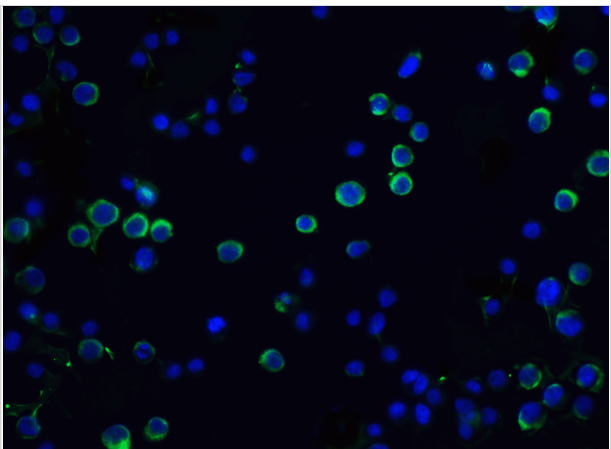
DFF45 Antibody 1

Western blot analysis of DFF45 in HeLa (H), Jurkat (J), A431 (A), and K562 (K) whole cell lysate with DFF45 antibody at 1:1000 dilution.



DFF45 Antibody 2

Immunocytochemistry of DFF45 in HeLa cells with DFF45 antibody at 5 µg/mL.



DFF45 Antibody 3

Immunofluorescence of DFF45 in HeLa cells with DFF45 antibody at 20 µg/mL.

Green: DFF45 Antibody (1141)
Blue: DAPI staining

Disclaimer

Disclaimer	Optimal dilutions/concentrations should be determined by the end user. The information provided is a guideline for product use. This product is for research use only.
------------	--

For research use only. For additional information, visit ProSci's [Terms and Conditions Page](#).